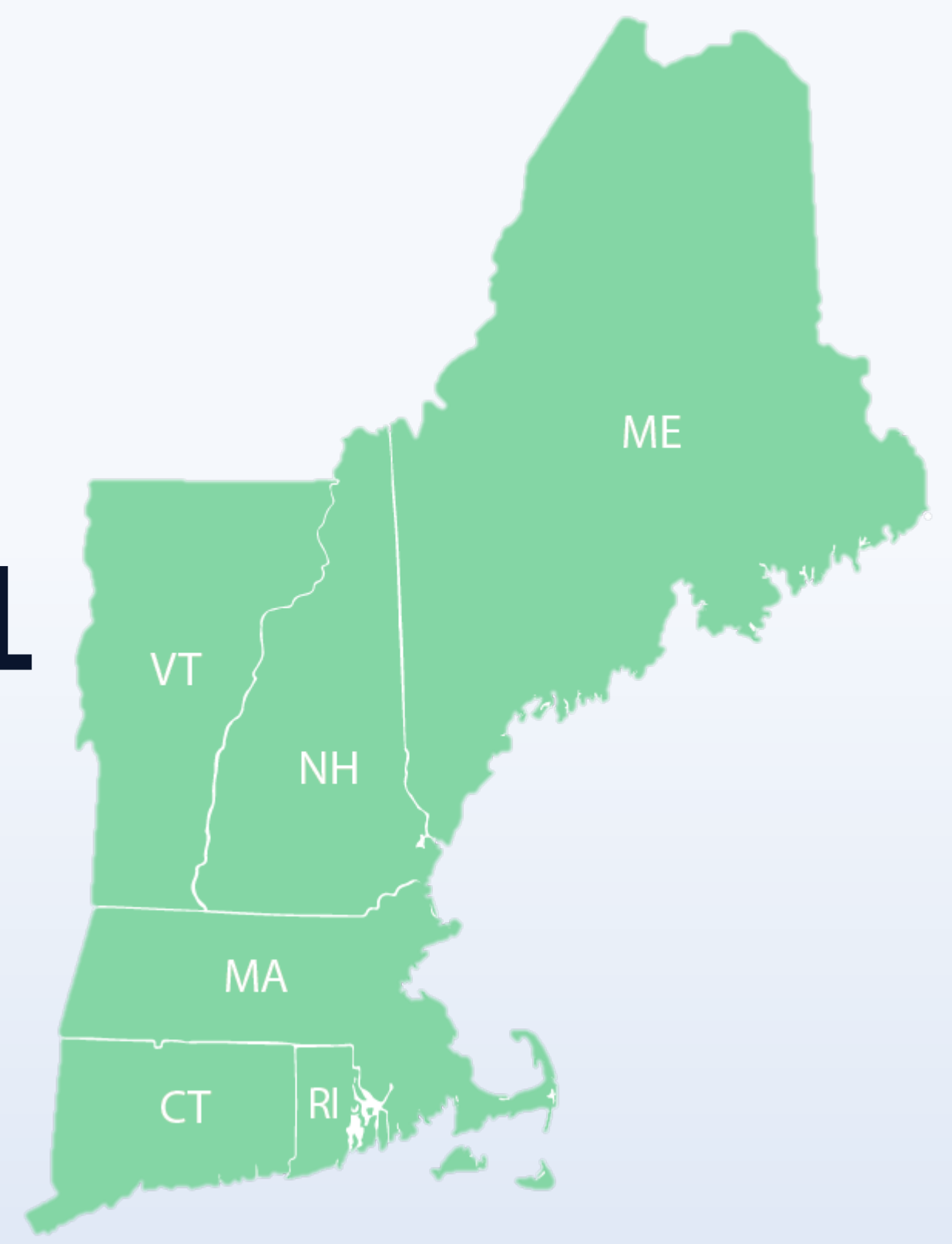




UCONN

TECHNICAL ASSISTANCE FOR BROWNFIELDS EPA REGION 1

The UConn TAB supports New England communities to advance investigation, cleanup and redevelopment of abandoned, potentially contaminated sites, protect public health and promote environmental justice.



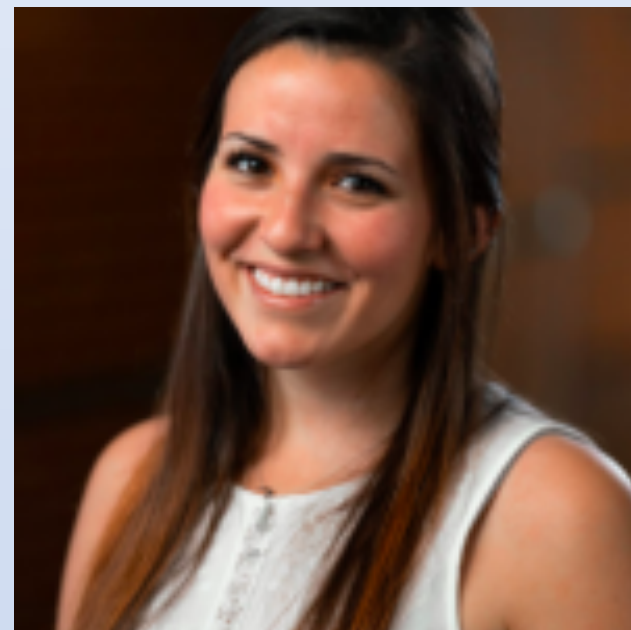
OUR TEAM



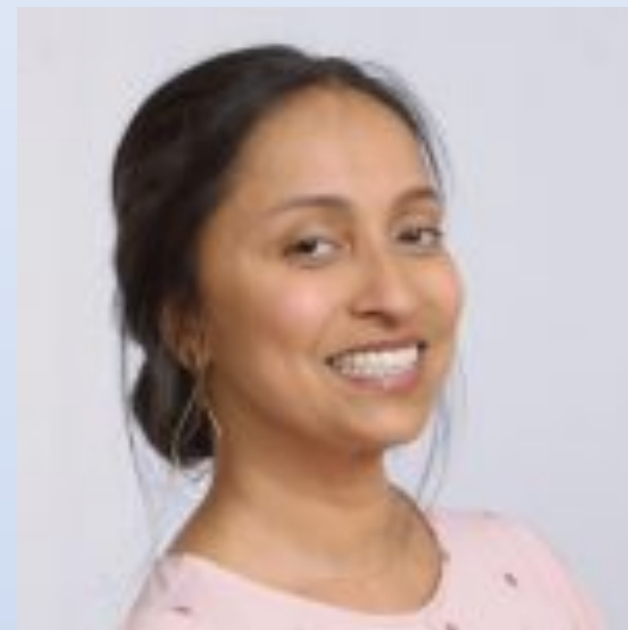
Marisa Chrysochoou, Ph.D.



Nefeli Bompoti, Ph.D.



Randi Mendes, Ph.D.



Rupal Parekh, Ph.D.



David Dickson, Ph.D.



Sara Wakai, Ph.D.

OUR SERVICES

MUNICIPAL ASSISTANCE PROGRAM

CONTINUING EDUCATION

- Webinar Series
- Short Courses
- Instructional Videos

COMMUNITY ENGAGEMENT

- Community Engagement Materials
- Community Meetings
- Community Engagement Plan

DIRECT TECHNICAL ASSISTANCE

- Brownfields proposals review
- One-to-one consultation

For more information visit:
www.tab.program.uconn.edu
OR email: uconn-tab@uconn.edu

MUNICIPAL ASSISTANCE PROGRAM (MAP)

The MAP program provides assistance to participating communities through the activities of the service-learning Brownfields Redevelopment courses at UConn.

Fall Semester

- August - November
- Support of EPA Grant Proposals

Spring Semester

- January - April
- Brownfield Technical Assistance

Summer Semester

- May - July
- Brownfield Technical Assistance

- Evaluation of redevelopment options
- Development of reuse scenarios



MAP



- Data collection for brownfield sites
- Review of site investigation reports
- Preparation of brownfield inventories