


Preparing for EPA Assessment Coalition Grants

Technical Assistance for Brownfields Program
EPA Region 1

Marisa Chrysochoou, Program Director

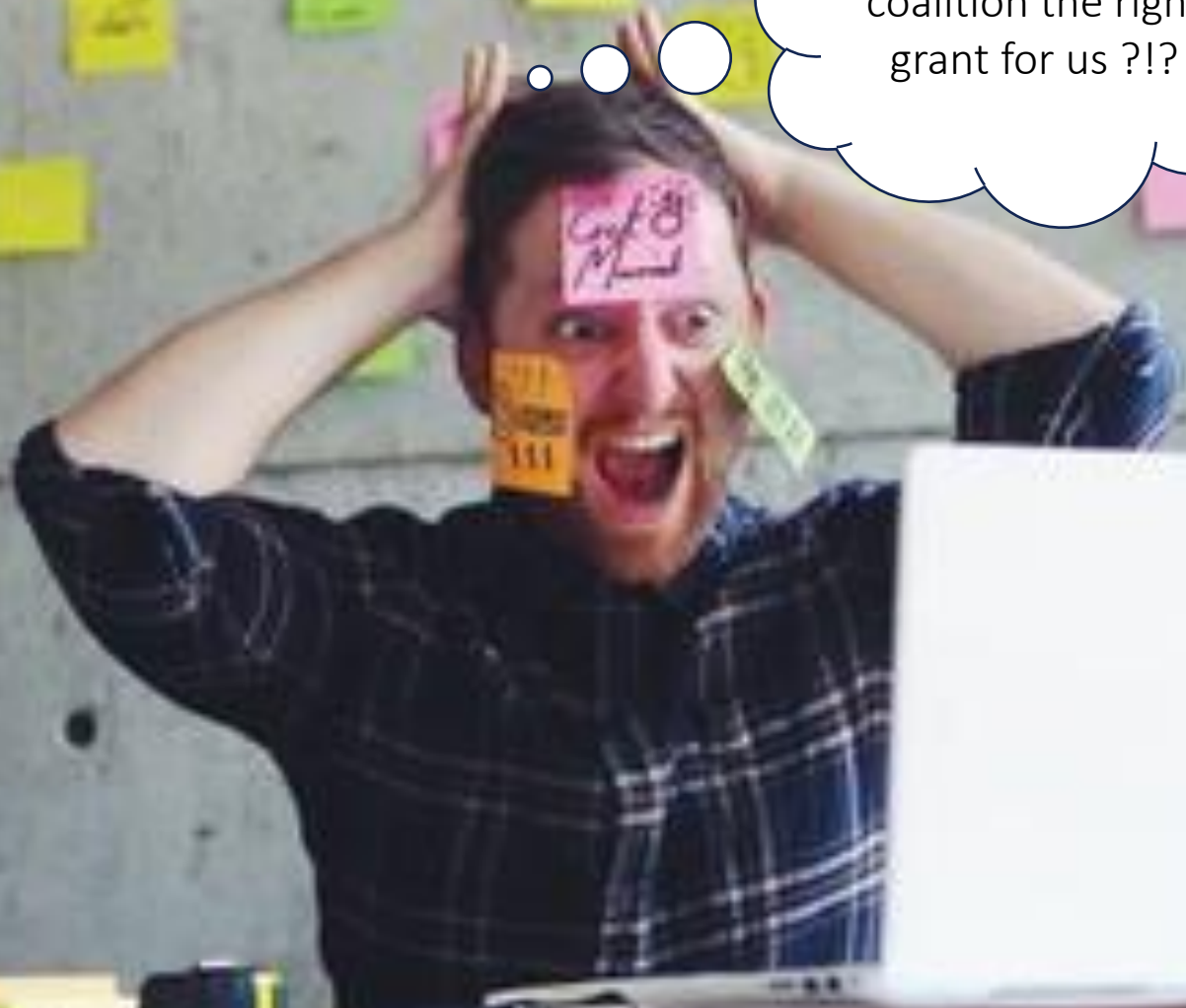


You on June 28th

A person wearing a straw hat and a colorful striped shirt is sitting in a white wooden beach chair on a sandy beach. They are looking out at the ocean. A thought bubble is connected to their head by a line of three small circles. The thought bubble contains the text: "I wonder whether community wide or coalition grant is the right grant for us...".

I wonder whether
community wide or
coalition grant is
the right grant for
us...

You on September 15th



Oh my God, is coalition the right grant for us ?!?

Learning Objectives – at the end of this webinar, you will know how to

Identify MARC options for FY25

Select the appropriate type of grant for your organization

Understand differences between Community Wide and Coalition Assessment grants

Evaluate partnerships for Coalition grants

Identify criteria to select type of grant, Target Areas and Site(s) for Assessment Grants

Plan for additional training and find resources to prepare the proposal



MARC grant Options FY25

Community-Wide Assessment

Coalition Assessment

Cleanup

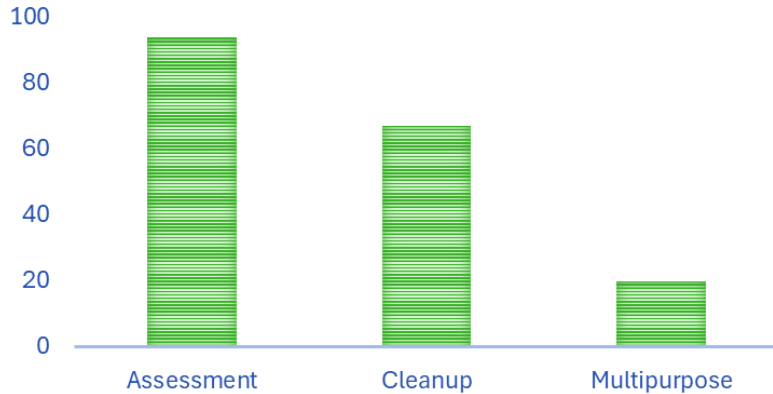
Multipurpose

Revolving Loan Fund

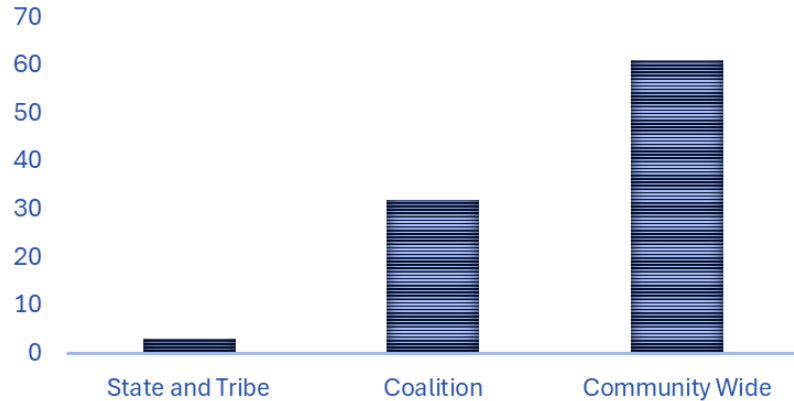


MAC grant Awards FY24

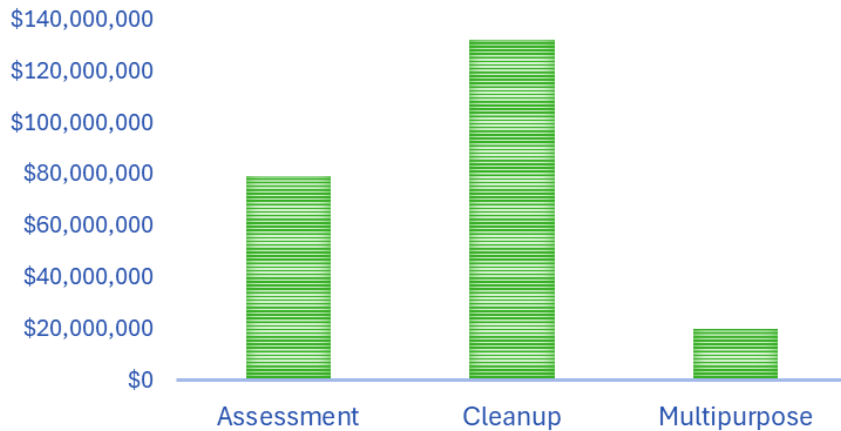
OF AWARDS FY24



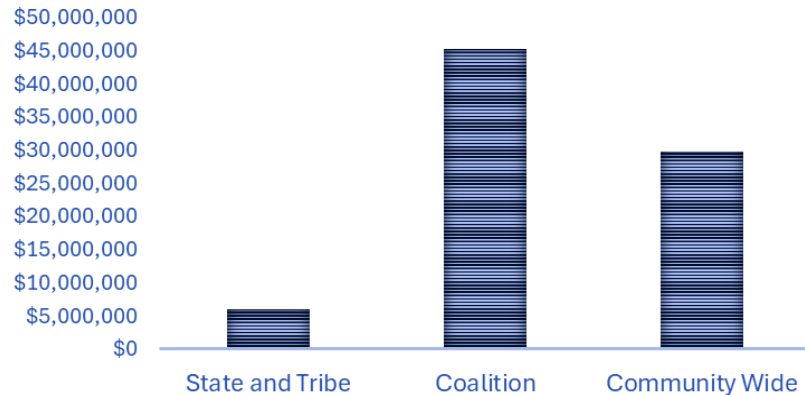
OF ASSESSMENT AWARDS FY24



\$ TOTAL AWARDED



\$ ASSESSMENT TOTAL AWARDED



Which grant is right for my organization?

Assessment

Multiple sites with no Phase I or II assessment

Sites can be privately owned – access agreement will be needed to conduct the work

Can be in one or multiple Target Areas (including multiple towns for regional entities)

Cleanup

Single site OWNED BY YOUR ORGANIZATION with Phase II assessment done

Assessment of Brownfield Cleanup Alternatives by consultant

General idea of site reuse plan

Multipurpose

Multiple sites at different stages of characterization

At least one site OWNED BY YOUR ORGANIZATION with at least partial Phase II

Typically in a single Target Area or Town



Types of Assessment Grants

Community
Wide



Single applicant
\$500K, 4 years

Coalition



Lead applicant and
between two and four
additional members
\$1.5M, 4 years



Eligibility for Assessment Grants

Community Wide

- Single applicant
- State, tribe, city or town, regional planning commission, economic development corporation, non-profit organization

Coalition

- Lead: state, tribe, regional planning commission
- Member:
 - Town, city, non-profit, land bank, EDC
 - ***Must NOT have any MARC grant after 2017***
 - Cannot be an agency or instrumentality of themselves



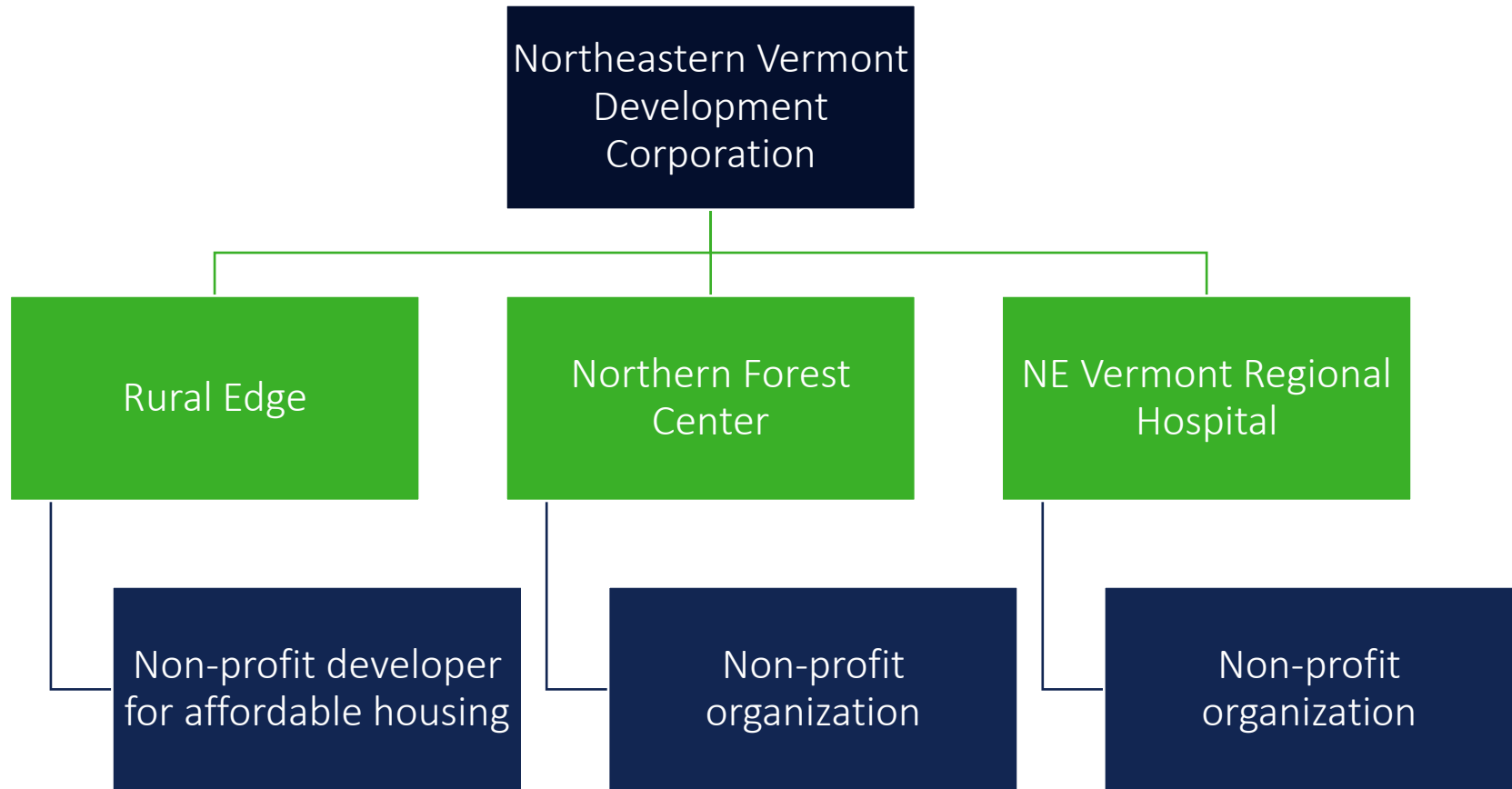
Other criteria for coalition members

Describe the non-lead members' *lack of capacity* to apply for and manage their own Brownfields Grant and their lack of access to Brownfield Grant resources to address brownfield sites.

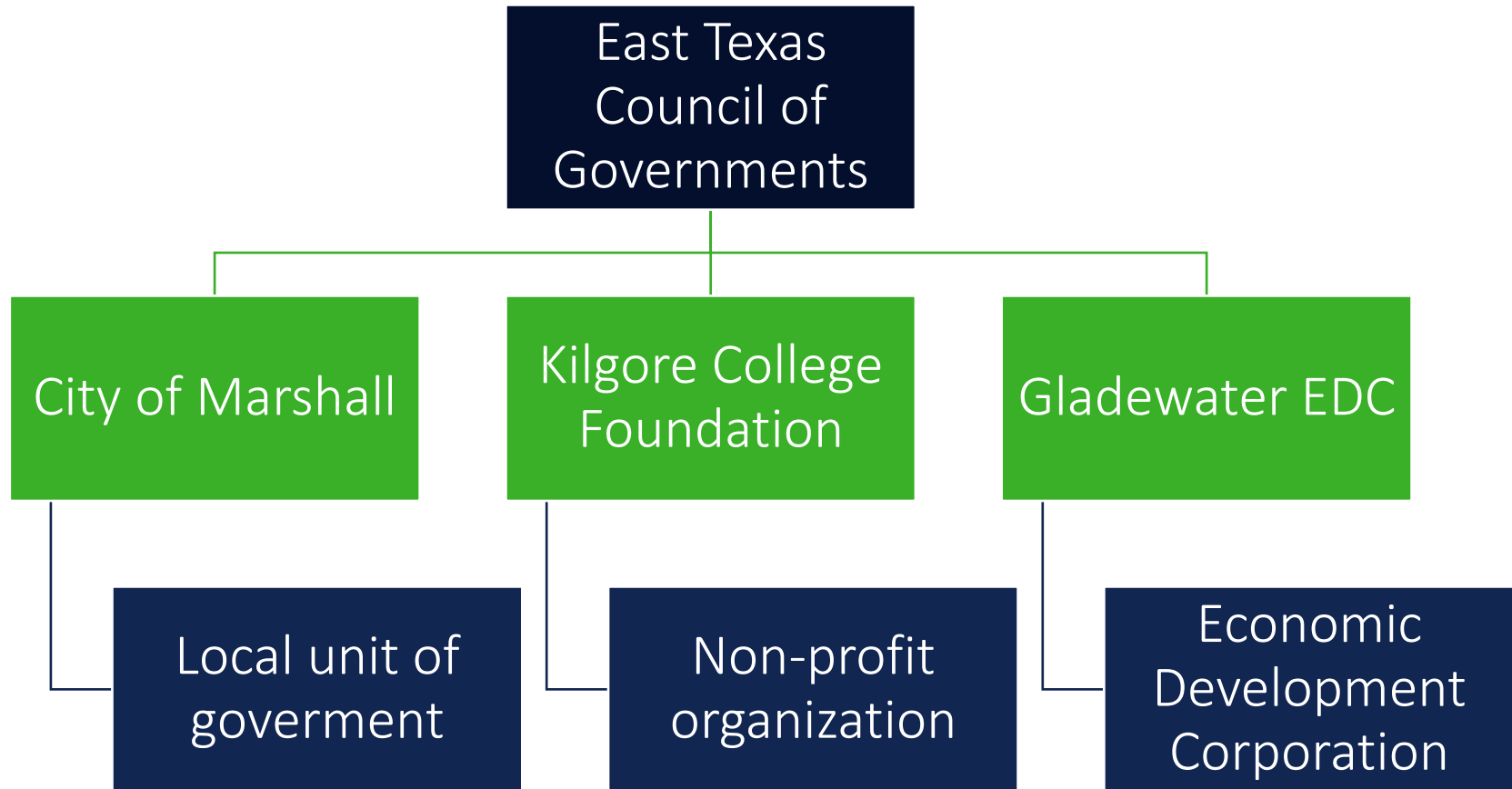
- Low population, rural community
- Low staffing levels
- Fiscal and administration systems
- High demands on other municipal services



Example of successful coalition in R1 – FY23



Example of successful coalition in other regions – FY22



Additional Requirements

Each member (lead and non-lead) must have one Target Area – no overlap allowed

Each member must have at least two priority sites

Minimum five sites assessed

Must have signed Memorandum of Agreement OR provide signed letters by each member



Memorandum of Agreement Template

Eight elements addressed

1. Grant period
2. Lead member
3. Coalition partners and contacts
4. General description of activities
5. Lead will conduct procurement
6. Lead will lead process development for site selection (*Lead Coalition member and each of the Coalition Partners may agree upon a minimum number of sites assessed per member at the start of the cooperative agreement to ensure equitable distribution of funds across all members' jurisdictions*)
7. Lead will work with member on scope of work for each site
8. Lead will ensure community engagement takes place



The chicken or the egg?

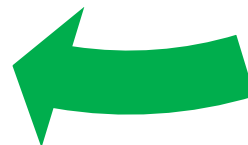
Selection of Target Areas and Priority Sites

Select sites in areas with underserved communities

Identify sites across geographic boundaries

Review area demographics compared to EPA criteria

Map sites and identify clusters in one or more Census Tracts (Target Area)



Priority Site identification

Must have at least two priority sites per member – one described in main narrative

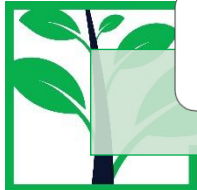
Must meet brownfield definition (underutilized or abandoned, potential for contamination)

Can be privately owned

Applicant cannot be liable for contamination

Schools can be considered for hazardous building material surveys

Consult state brownfield coordinators and state lists



Upcoming Opportunities & Grant Support Resources



UCONN
TAB

SUMMER WEBINAR SERIES

- ✓ **JUNE 28TH - PREPPING FOR A COALITION GRANT**
MARISA CHRYSOCHOOU, PH.D. - UCONN TAB PROGRAM DIRECTOR
- ✓ **JULY 10TH- PREPPING FOR A CLEANUP GRANT**
MARISA CHRYSOCHOOU, PH.D. - UCONN TAB PROGRAM DIRECTOR
- ✓ **JULY 19TH - BROWNFIELD REDEVELOPMENT: BROWNFIELDS TO HEALTHFIELDS**
MILES BALLOG - NATIONAL BROWNFIELDS PRACTICE LEADER AT ENSAFE



tab.program.uconn.edu



SUMMER GRANT SUPPORT

BROWNFIELD GRANT SUPPORT

ARE YOU PLANNING TO APPLY FOR AN EPA OR STATE FUNDED BROWNFIELD GRANT THIS COMING FALL? UCONN TAB IS HERE TO HELP YOU GET STARTED AND PREPARE A STRONG APPLICATION. TO LEARN MORE SEND US AN EMAIL AT UCONN-TAB@UCONN.EDU

MORE INFO AT:
[S.UCONN.EDU/GRANTREVIEW](https://s.uconn.edu/grantreview)

TAB.PROGRAM.UCONN.EDU

Past webinars for MARC grant support:

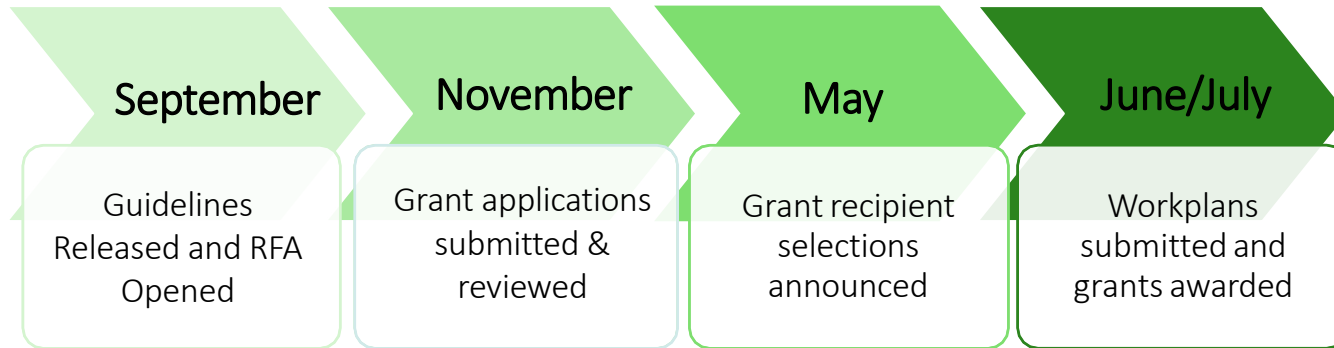
Prepping for MAC grants, Addressing displacement, Using Public health data, EJSCREEN, and more can be found at:

tab.program.uconn.edu/workshops-webinars/



UCONN

Typical Timeline for Grant Cycle



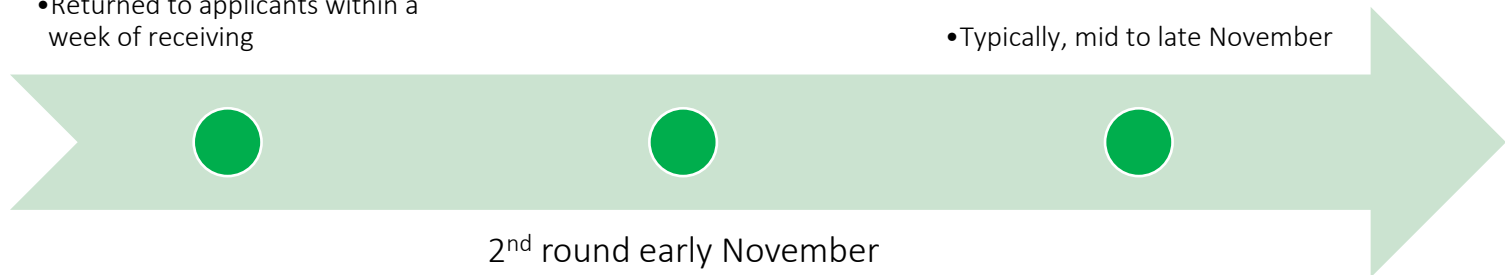
UConn TAB Provides free reviews and support on grant applications. Dates are subject to change based on deadline announced in September

1st round late October

- Returned to applicants within a week of receiving

Final Submission

- Typically, mid to late November



2nd round early November

- Returned to applicants within a week of receiving





MUNICIPAL
ASSISTANCE
PROGRAM
(MAP)

FALL MAP

REQUEST FOR PROPOSALS OPEN

APPLICATIONS DUE JULY 15, 2024

tab.program.uconn.edu/map-requests-for-proposals/

Narrative
Section I

- Target Area Description
- Site Description (you provide the sites)

Narrative
Section II

- Demographic data
- Public Health data
- Stakeholders
- Community Engagement Plan

Cleanup and
Multipurpose

- Assistance with organization of public meeting

Additional
Resources

- Templates of grant application and supporting documents
- Review of full grant application

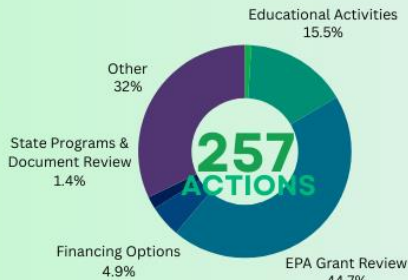


Impact of our Support

TECHNICAL ASSISTANCE TO BROWNFIELDS EPA REGION 1 ANNUAL IMPACT 2023

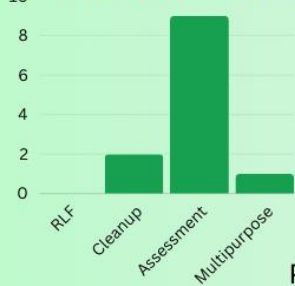


166
Communities Received Direct Technical Assistance



33% of Communities Served were EJ

FY23 83% Success Rate

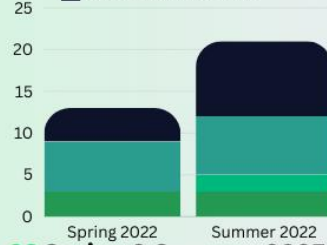
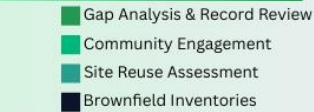


MUNICIPAL ASSISTANCE PROGRAM

41

Program Recipients

12 Fall 2023
Participants



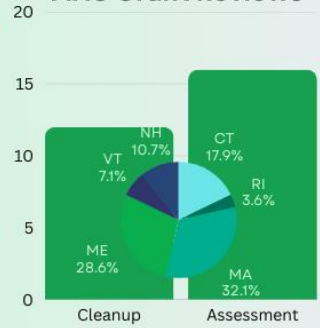
29 Spring & Summer 2023
Participants

Feedback showed that the provided EPA MARC Grant Resources were "Very Useful" and "Extremely Useful"

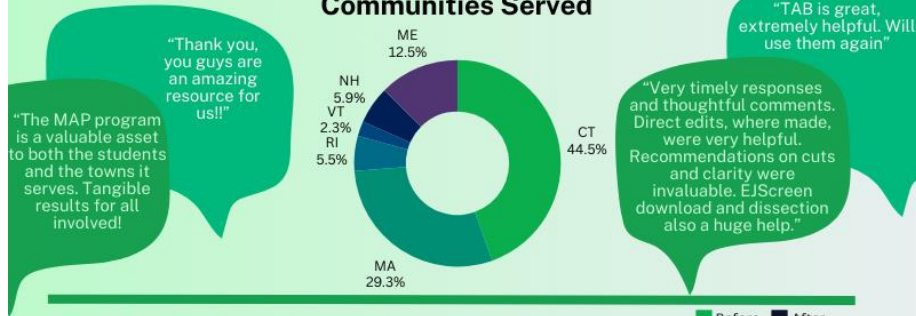


61% of Grant Reviews Supported EJ Communities

28 FY24
MAC Grant Reviews



Distribution of Communities Served



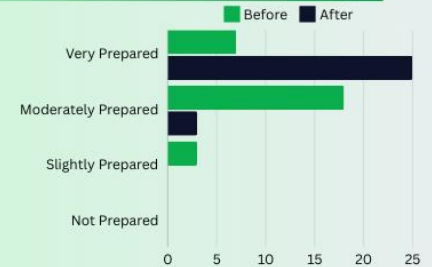
"Thank you, you guys are an amazing resource for us!!"

"The MAP program is a valuable asset to both the students and the towns it serves. Tangible results for all involved!"

"TAB is great, extremely helpful. Will use them again"

"Very timely responses and thoughtful comments. Direct edits, where made, were very helpful. Recommendations on cuts and clarity were invaluable. EJScreen download and dissection also a huge help."

Feedback showed that those who received MARC Grant assistance felt "Extremely Knowledgeable" and "Very Prepared" with the grant writing & grant application process after receiving assistance.



Feedback is based on a form sent out to all MAP participants. 28 responses were received

32 EPA MAC Grants were awarded for FY24
UConn TAB Supported 30 grant reviews,
25 were successful (78%)

Questions?

Marisa Chrysochoou, Ph.D.
UConn TAB – Program Director

Email: Uconn-tab@uconn.edu

Website: Tab.program.uconn.edu

LinkedIn: linkedin.com/in/uconn-tab/

Go to our website to subscribe to our
newsletter!



UConn