



NAUGATUCK VALLEY  
COUNCIL of GOVERNMENTS

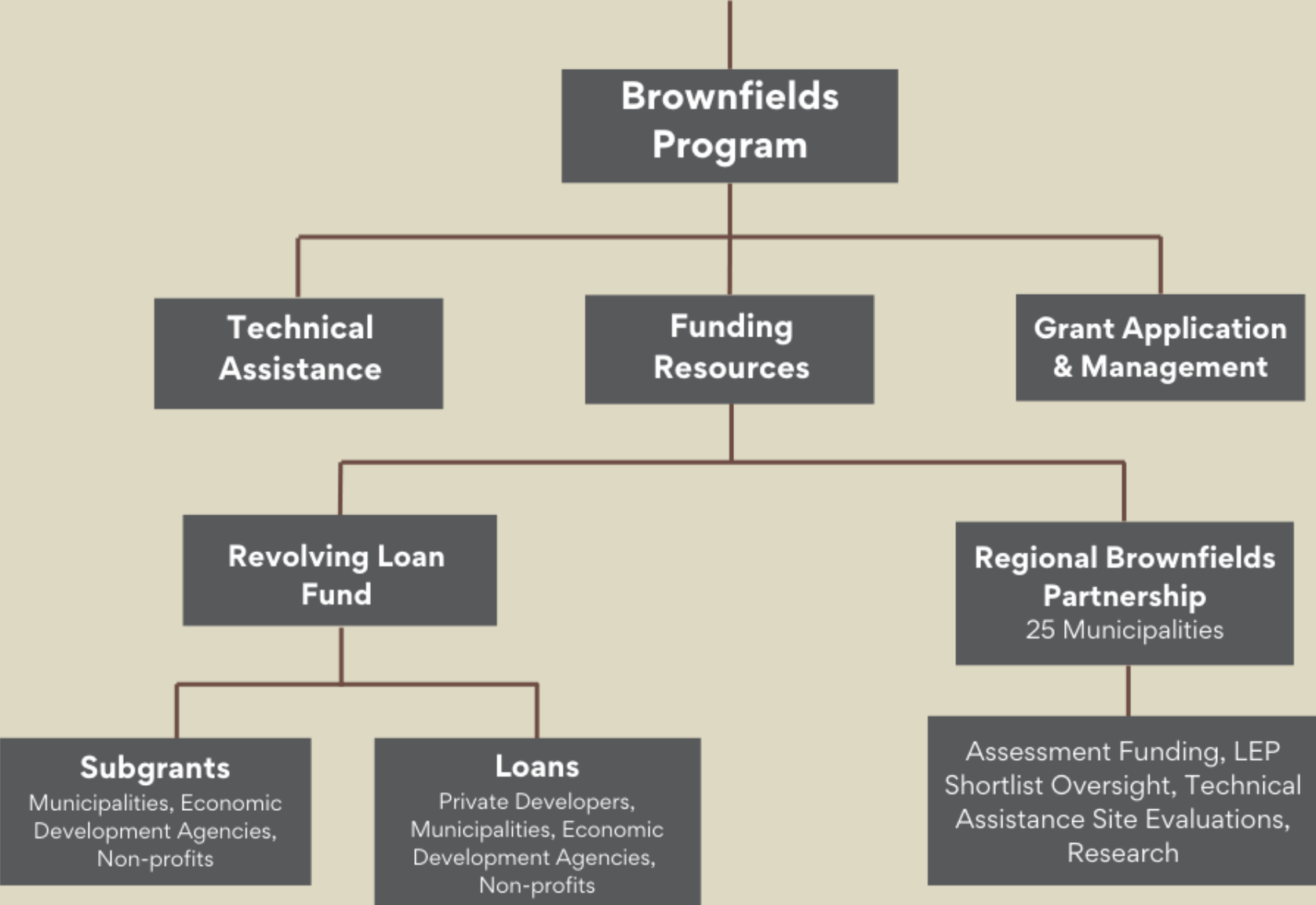
# Brownfields Program







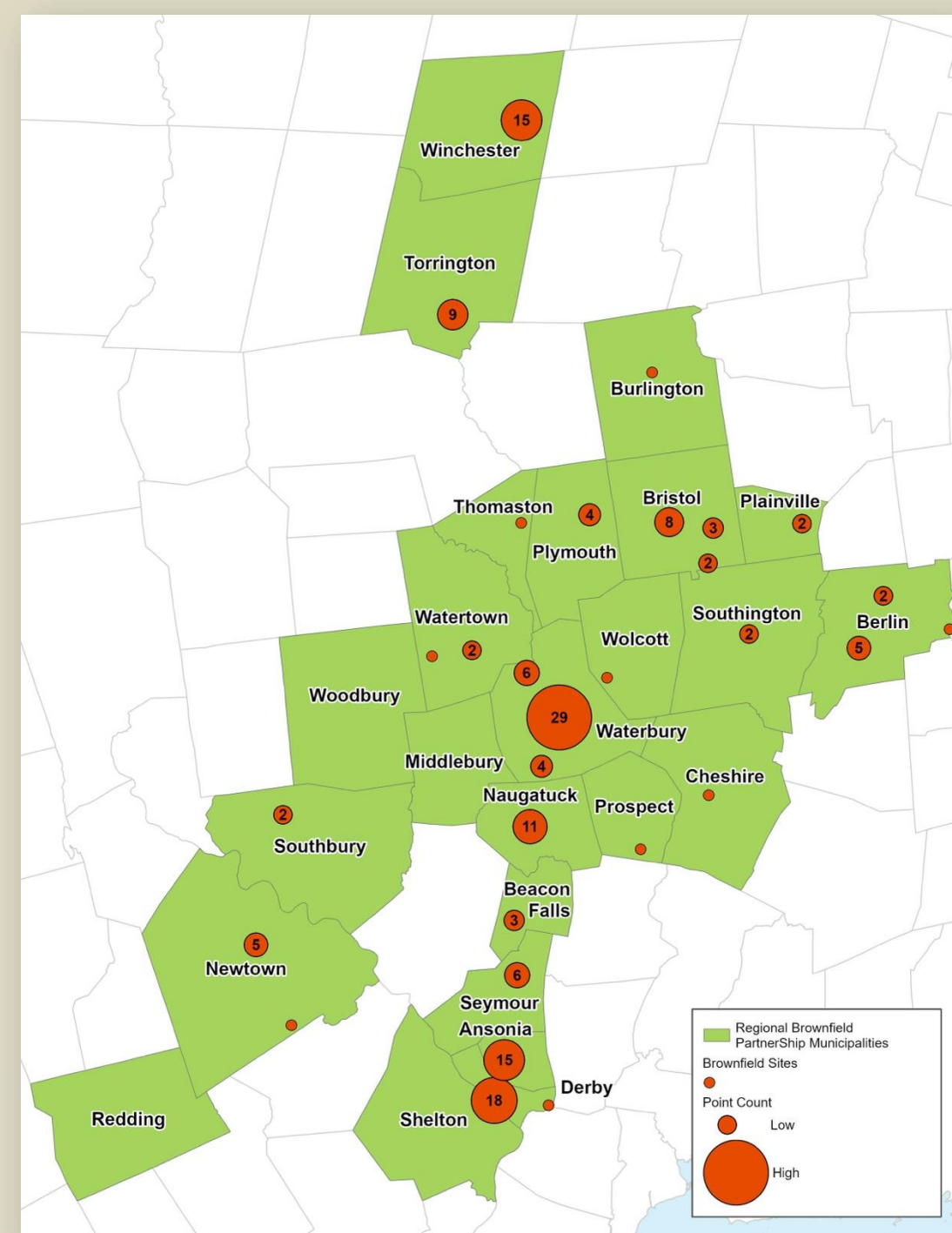
# Organizational Chart





# Regional Brownfields Partnership

- Representatives from 25 municipalities
- Provides access to federal and state brownfields subgrants and loans.
- Offers technical assistance for environmental assessments, remediation, and cleanup.
- Facilitates collaboration among municipalities to share best practices.





# EPA Assessment Funding

## **Services Provided:**

- Up to \$100k in funding for assessment activities
- Oversight and procurement of environmental firm to complete assessment activities
- Project management

## **Eligible Entities:**

- RBP municipalities
- Nonprofits
- Other private parties

## **Eligible Activities:**

- Environmental Site Assessments (Phase I, Phase II, & Phase III)
- Cleanup planning
- Community involvement and outreach activities

### **2024 Award:**

6 Sites currently  
being funded

### **FY2021 Award:**

7 Sites assessed

### **FY2016 Award:**

8 Sites assessed



# Revolving Loan Fund (RLF) Program

## **Services Provided:**

- Up to \$500k in funding for subgrants
- Low-interest loans at 0% for up to 24 months
- Project management and LEP oversight

## **Eligible Entities:**

- RBP Municipalities
- Non-profits
- Other private parties

## **Eligible Activities:**

- Clean up planning & Remediation
- Health & Environmental monitoring
- Community involvement and outreach



100 Franklin Street, Torrington; 2020 RLF Recipient





# Impact



**14** municipalities with projects

**~1,453** jobs created

**186** publicly-funded projects

**2,477** funded brownfield acres

**Over \$10m** in brownfield funding managed

**Over \$110m** public and private dollars  
leveraged by NVCOG's grants



2 Factory Street, Derby



0 Maple Street, Naugatuck



170 Freight Street, Waterbury





# 67-71 Minerva Street, Derby

## Funding:

- **NVCOG EPA** - \$420,421 (Assessment and Remediation)
- **State and Federal Investments** - \$1,125,351
- **> \$16M+** private investment

## End Use:

- 90 high quality apartments with designated affordable units, ground-floor commercial space and parking
- Site location enhances accessibility to public transportation and walkability







# 313 Mill Street / 777 S. Main Street, Waterbury

## Funding:

- **NVCOG EPA-** \$371,000
- Over \$2M in investment from Municipal, State, Federal, and philanthropic funding sources.

## End Use:

- Brass City Harvest is a local food hub that infuses more than 200,000 pounds of fresh, locally grown food into the community each year
- Neighboring vacant parcels will be remediated with NVCOG EPA funds to house an expanded marketplace and new greenhouses for community use.







# Quarterly Newsletter

- Funding opportunities
- Events (trainings and conferences)
- Project Updates
- Ask Ricardo
- Brownfields in the news

*You are always welcome to get in touch at [iortiz@nvcogct.gov](mailto:iortiz@nvcogct.gov) if you have other content you'd like to see in the newsletter!*



**Regional Brownfields Partnership  
of West Central Connecticut**



## **RBP NEWSLETTER**

Winter 2025

### **2024 Annual RBP Meeting Recap**



Annual Meeting at BADSONS Beer Co.







# Thank you

**Ricardo Rodriguez**

Brownfields Program Director

 203-489-0513

 rrodriguez@nvcogct.gov



<https://nvcogct.gov/current-projects/brownfields-projects/>