

Southern New Hampshire Roundtable Event

Hosted by:

UConn TAB, Southwest Region Planning Commission, Lakes Regional Planning Commission, Strafford Regional Planning Commission, Central New Hampshire Regional Planning Commission, Southern New Hampshire Planning Commission, Nashua Regional Planning Commission

Sponsored by:

Weston & Sampson



September 24th, 2025

Thank you to our Sponsor!

Weston & Sampson



Welcome & Opening Remarks

New Hampshire Department of Environmental Services (NHDES)

Mindy Bubier



Agenda

9:10 AM – 9:40 AM | Brownfields 101, UConn TAB Services, & New England Rural Health Association

- ☐ UConn TAB – Katie Malgioglio and Hayley Clos
- ☐ UConn TAB Partner NERHA – Nylab Noori

9:40 AM – 10:20 AM | Introduce the RPOs

- ☐ Southwest Region Planning Commission (SWRPC) - J.B. Mack
- ☐ Lakes Regional Planning Commission (LRPC) - Glenn Trefethen
- ☐ Strafford Regional Planning Commission (SRPC) - Lisa Murphy
- ☐ Central New Hampshire Regional Planning Commission (CNHRPC) - Matt Monahan
- ☐ Southern New Hampshire Planning Commission (SNHPC) - Cameron Prolman
- ☐ Nashua Regional Planning Commission (NRPC) - Jay Minakrah

10:20 AM – 10:40 AM Break

10:40 AM – 11:10 AM | Brownfields Success Stories Panel

- ☐ SWRPC - J.B. Mack
- ☐ Nobis Group- Adam Roy
- ☐ Weston and Sampson – Todd Bridgeo

11:10 AM – 11:30 AM | Speaker Presentations

- ☐ EPA - Jim Bryne and Meena Mortavazi
- ☐ RLF TAB Grow America – Erin Howard (Zoom)
- ☐ ADAAPTA - Krisandra Provencher

11:30 AM – 11:40 AM | Q&A & Open Discussion

11:40 AM – 12:00 PM | Networking & Closing Remarks



Brownfields 101 & TAB Services

UConn TAB

Katie Malgioglio



WHAT IS A BROWNFIELD?

EPA Definition:

A real property, the expansion, redevelopment, or reuse of which may be complicated by the presence or potential presence of a hazardous substance, pollutant, or contaminant

In plain language...A site that is completely or partially abandoned AND Is likely polluted from past human activities

How to Identify a Brownfield:

An area with blight, or deterioration such as: Abandoned buildings, eyesores, active but underutilized facilities

Before



After



The **Sanford Mill** was formerly used for the manufacture of fabrics, light bulbs, and plastic products which resulted in a range of environmental contaminants including semi-volatile organic compounds (SVOCs) and PCBs along with the building containing lead-based paint and asbestos

Redeveloped into a mix-use housing and commercial building





SO, WHAT'S NOT A BROWNFIELD?



Active facilities of any kind,
even if contamination is
suspected



Residential buildings
without Hazardous Building
Materials



Superfund (NPL) sites

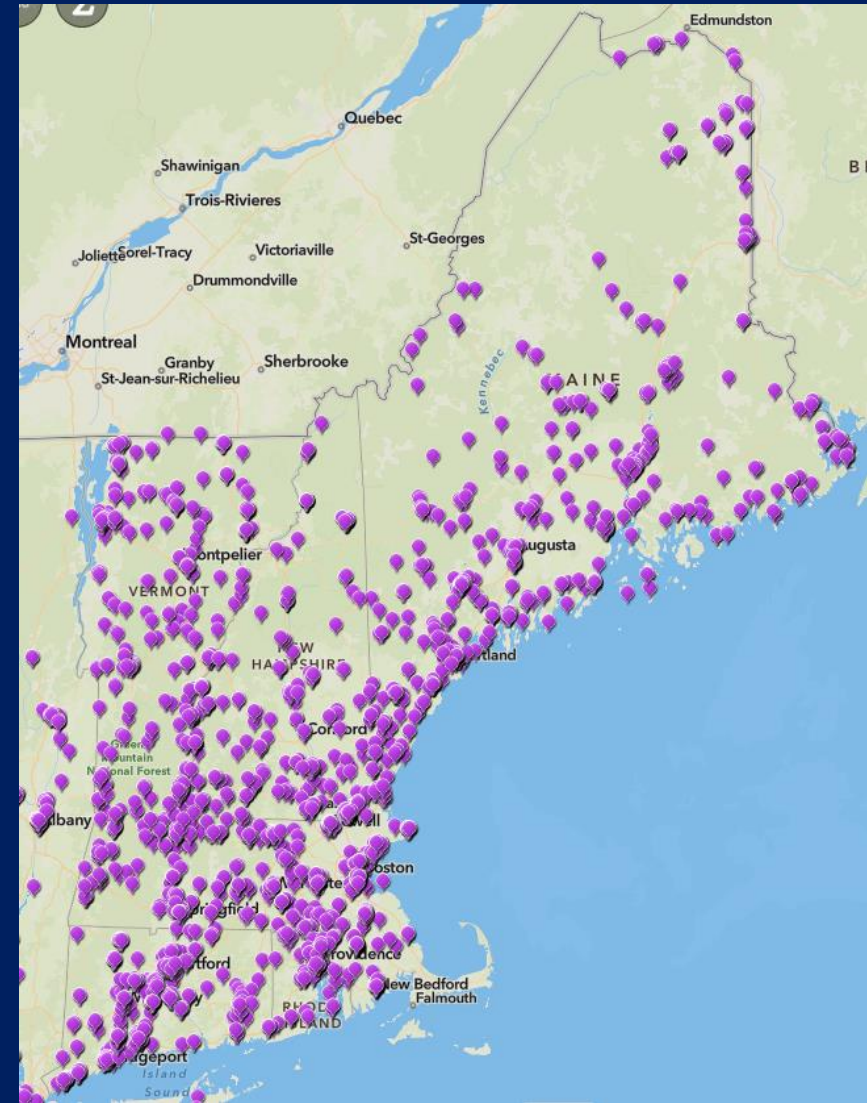


Sites under federal
jurisdiction



There are over 3000 brownfields that have been formally identified in New England but many remain unlisted

At least 353 identified in NH alone with many still unidentified



Source: EnviroAtlas



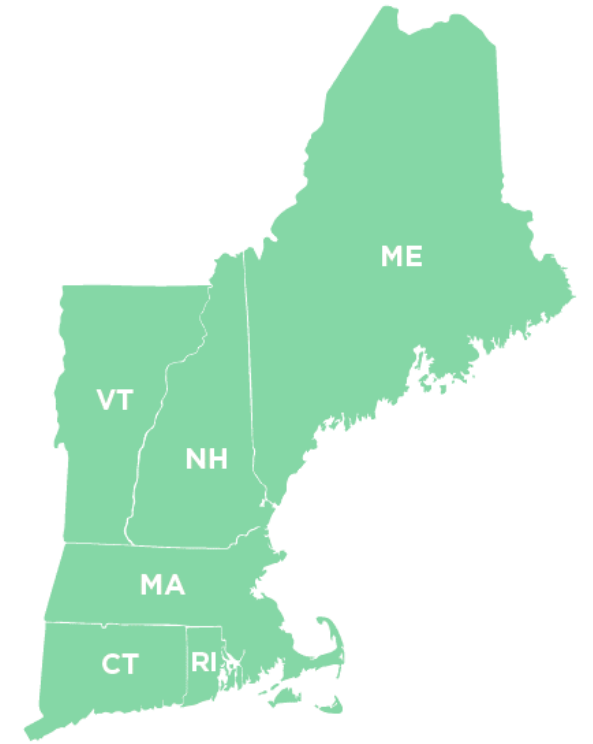
BROWNFIELDS IMPACT NEGATIVELY...



What is UConn TAB

Technical Assistance to Brownfields

- provides technical assistance to communities, states, Tribal Nations and other public entities
- help address their brownfield sites and to increase their understanding and involvement in brownfields cleanup, revitalization and reuse
- TAB is available at no cost to communities
- UConn TAB serves Region 1 (New England)



**Equal Distribution of
Resources in all 6 New
England States and Tribes**



MEET OUR TEAM



Randi Mendes, Ph.D.

Executive Director
Environmental Engineer
University of Connecticut
randi.mendes@uconn.edu

Specialties and Projects



Wayne Bugden, LEP

Project Manager
University of Connecticut
wayne.bugden@uconn.edu

Specialties and Projects



Demian A. Sorrentino, AICP, CSS

Project Manager
University of Connecticut
demian.sorrentino@uconn.edu

Specialties and Projects



Katie Malgioglio, LMSW

[Community Engagement](#) Manager
School of Social Work
University of Connecticut
katherine.malgioglio@uconn.edu

Specialties and Projects



Aaron Hinze, MPA

Project Manager
Civil & Environmental Engineering
University of Connecticut
aaron.hinze@uconn.edu



Hayley Clos, Ph.D.

UConn TAB Postdoc
University of Connecticut
hayley.clos@uconn.edu

NEW ENGLAND RURAL HEALTH ASSOCIATION



New Partnership

UConn TAB Partner – Rural Outreach and Engagement



Nylab Noori, MPH

UConn TAB Partner - Northern New England Outreach
Environmental Health Associate Program
Manager at New England Rural Health Association (NERHA)

NERHA supports UConn TAB by serving as a link between rural communities and technical experts. This helps foster collaboration among communities and municipalities, ensures public health considerations are included in Brownfield assessment and cleanup, and strengthens local capacity to address these challenges.

Connect with Community Hubs: Libraries, Health Center, State Offices Of Rural Health (SORHs), municipalities, towns

Conduct Individual Outreach: MAP 2025 30+ Municipalities reached



For over 25 years the New England Rural Health Association (NERHA) has served as the state rural health association for the six New England states. We are a non-profit organization dedicated to advancing rural health. NERHA provides education, training, consulting, and advocacy in support of the rural health organizations and individuals in our region.

NERHA Reach, By The Numbers:

- ✓ 10,000+ People Served by NERHA Programs
- ✓ 100+ Partner Organizations Across New England
- ✓ 300+ Communities Impacted
- ✓ 550+ Members
- ✓ 5,500+ Mailing List

Stay Connected With Us:

- ✓ Nerha.org
- ✓ Join our Newsletters
- ✓ Read "Rural Roots"
- ✓ Become a Member



DIRECT TECHNICAL ASSISTANCE

RESPONSIVE, ACCESSIBLE, AND EXPERT REFERRALS



Direct Technical Assistance

Municipal Assistance Program

Continuing Education

Community Engagement

Technical Document Review

- Review of Environmental Site Assessment Reports, Remedial Action Plans, Planning Documents

Brownfields Proposals Review

- EPA Brownfields proposals (assessment, cleanup, multipurpose, RLF) and State Program proposals

Access to Resources & Procurement Support

- Fact sheets, example proposals, RFQ/RFP review, and documents

Quick Availability

- Answer Technical Questions



UConn
REGION 1 TECHNICAL
ASSISTANCE TO
BROWNFIELDS



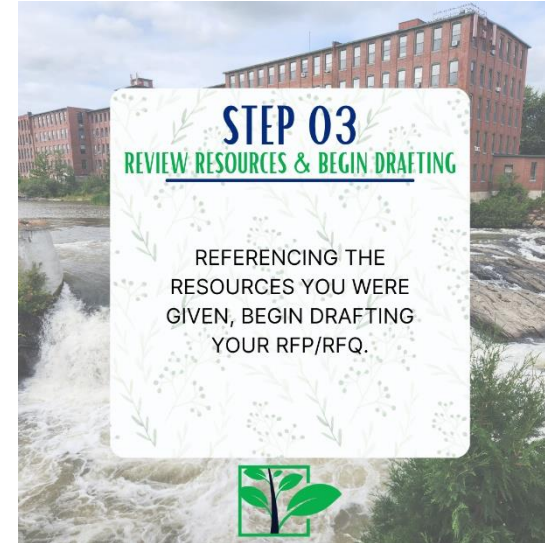
STEP 01
SET UP A MEETING

EMAIL US AT
UConn-TAB@UConn.EDU
WITH YOUR GRANT
APPLICATION AND
COOPERATIVE AGREEMENT IF
AVAILABLE AND **SCHEDULE**
AN APPOINTMENT.




STEP 02
UConn TAB SENDS RESOURCES

WE WILL SHARE SOURCES
SUCH AS RFP TEMPLATES
AND OTHER USEFUL
RESOURCES FOLLOWING THE
MEETING.



STEP 03
REVIEW RESOURCES & BEGIN DRAFTING

REFERENCING THE
RESOURCES YOU WERE
GIVEN, BEGIN DRAFTING
YOUR RFP/RFQ.



STEP 04
SUBMIT DRAFT FOR REVIEW

FILL OUT THE FORM LINKED
HERE AND INCLUDE THE
DRAFT OF YOUR RFP/RFQ.
UConn TAB WILL REVIEW
AND SET UP A MEETING TO
GO OVER THE COMMENTS
WE HAVE.



 Procurement Services Webinar (UConn TAB)

Watch later Share

 **TAB**
REGION 1

**PROCUREMENT
SERVICES**

Watch on  YouTube

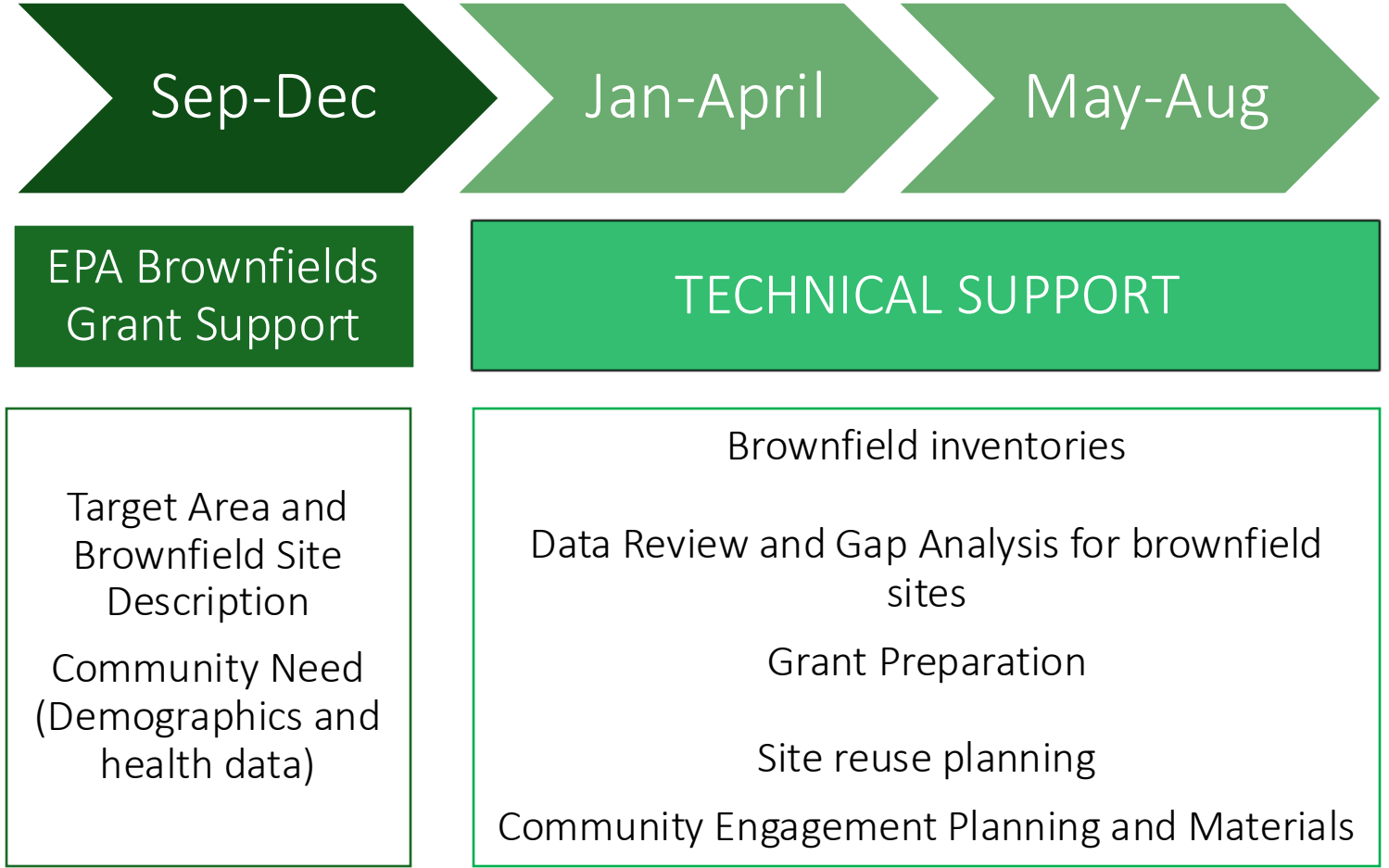
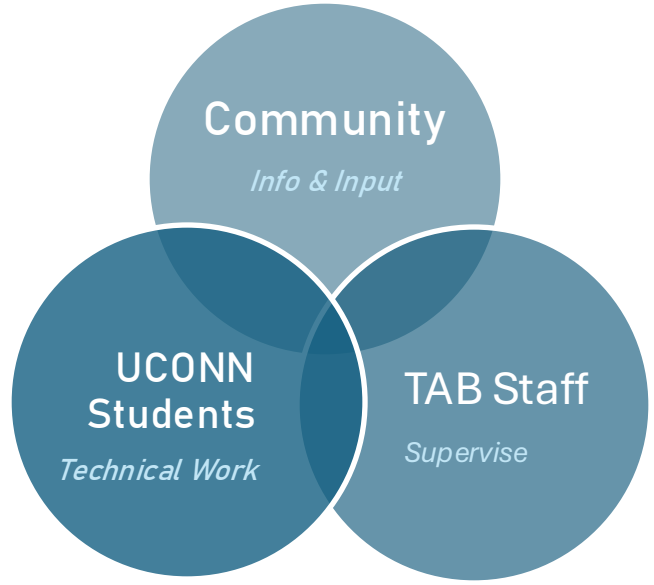


MAP - SERVICE LEARNING COURSE


STRONG COMMUNITY PARTNERSHIPS & COLLABORATIONS





- Direct Technical Assistance
- Municipal Assistance Program
- Continuing Education
- Community Engagement





BROWNFIELD INVENTORY


- 

Reported Releases
- 

Site Reconnaissance
- 

Tax Delinquency
- 

Sanborn Maps
- 

Known Sites
- 

Existing Brownfield Lists

Site Name	Site Size (acres)	Opportunity Zone
Address	Current Zoning	Underserved Community
Zip Code	Current Owner	Vulnerability Index
Assessors Card ID number	Tax Payment Status	Past Uses
Parcel Number	Existing Buildings	Public Utilities
Redevelopment Status	FEMA Flood Zone	Parking Spaces
Site Type	Wetlands	Available Site Documents
Possible Contamination	LUST Designation	EPA Grant Eligibility



RECORD REVIEW

Summit Casting

ACREAGE: 1.69

OWNERS: Morse Street Realty Corporation

LAND USE: one-to-two story industrial facility

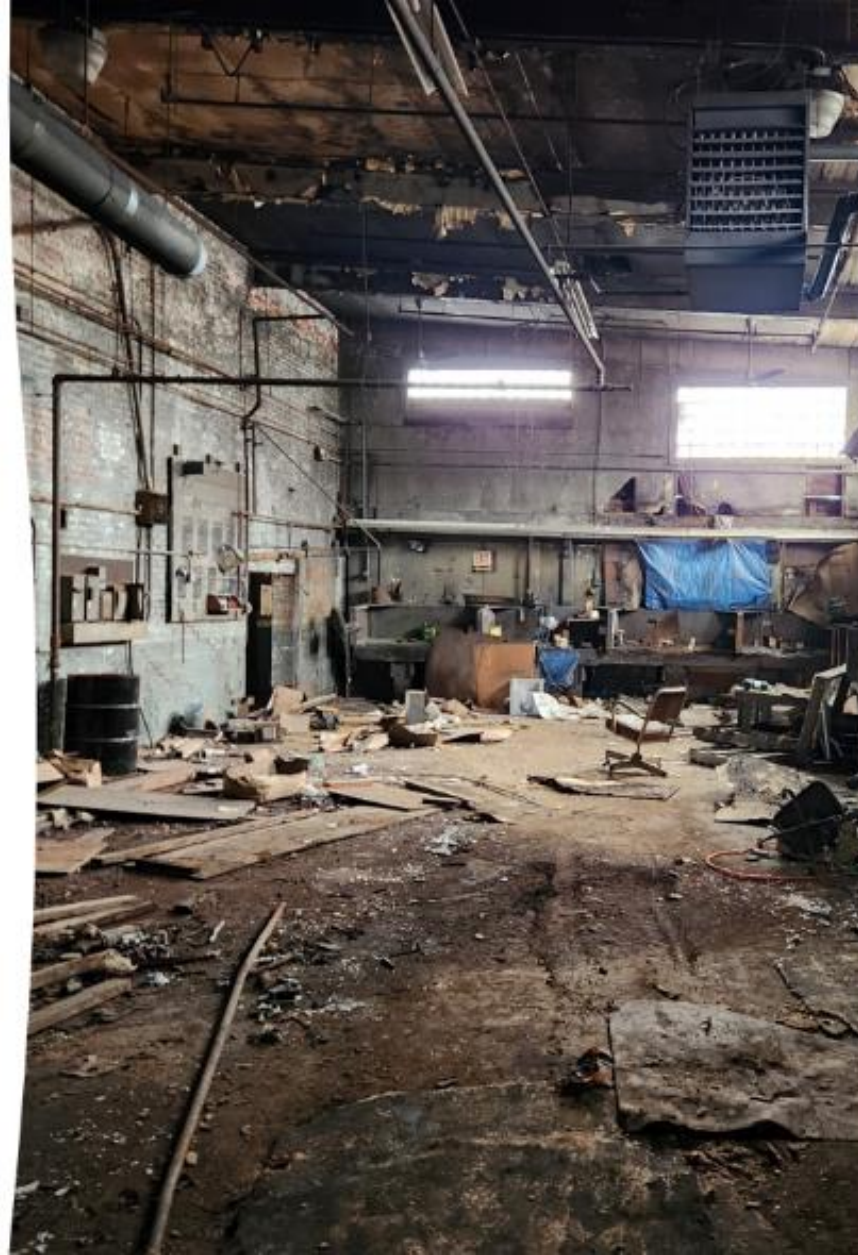
HISTORICAL USE: mold design, sand mold fabrication, casting, machining castings, storage, shipping & receiving

CURRENT USE: abandoned

- parties

PARCEL ID: 149-008-000

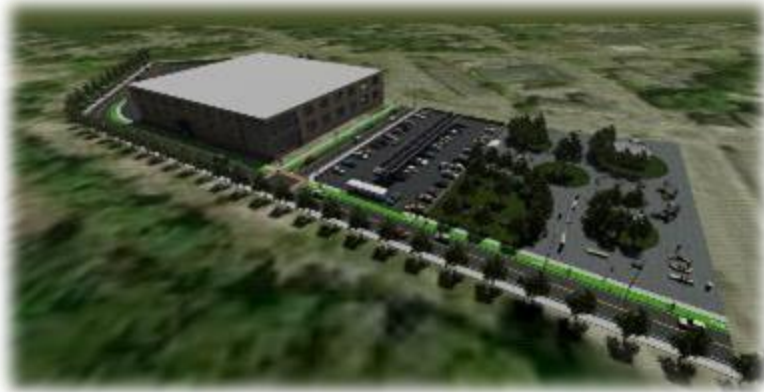
- "Parcel 8"



SITE REUSE ASSESSMENT PROJECTS

GOAL: Identify potential reuse options for the brownfield based on the **community's vision** and other site and surrounding area conditions

Provides a full evaluation of the **opportunities, constraints and range of redevelopment possibilities** related to the reuse of a brownfield site.



Property Information

- Ownership
- History
- Tax status
- Occupancy
- Zoning
- Environmental Considerations

Opportunities & Constraints

- Useable Acreage
- Viability
- Accessibility
- Structure
- Infrastructure
- Utilities
- Neighboring Land Use

Community

- Strengths & Weaknesses
- Expectations

Market

- Local Economy
- Regional Economy
- Demographics
- Land Availability

- Site characteristics and needs
- Area economy and demographics
- Physical, environmental conditions
- Applicable regulations
- Real estate market conditions







RENDERINGS

(Sketchup and Lumion)



CONTINUING EDUCATION

BREAKING DOWN BARRIERS AND CO-LEARNING



Direct Technical Assistance

Municipal Assistance Program

Continuing Education

Community Engagement

Past Webinars

- Jan 29th Brownfield Redevelopment & TAB Services
- Feb 19th Brownfields: Exploring Disproportionate Environmental Impacts on Communities
- Mar 11th Community Engagement in Aging Communities
- Apr 16th Using Brownfield Funding for Local Planning A Planner's Perspective)



UConn TAB Summer Webinar Series

- May 1st - Planning for a Successful Fall EPA Brownfield Grant Application: Don't Wait Until September!
- May 22nd - Grant or No Grant: Let's Navigate Your Next Move
- June 18th - Environmental Communication Strategies for Developing Health Literacy
- July 9th - Engage & Empower: Strategies to Spark Community Involvement
- July 30th - Engaging Rural Healthcare Providers in Brownfields Awareness and Advocacy



Wednesdays

12:00 PM - 12:30pm



Virtual(Webex)



Register

s.uconn.edu/summerwebinar25



UConn
REGION 1 TECHNICAL
ASSISTANCE TO
BROWNFIELDS

UConn
REGION 1 TECHNICAL
ASSISTANCE TO
BROWNFIELDS

COMMUNITY ENGAGEMENT

BREAKING DOWN BARRIERS AND CO-LEARNING



Direct Technical Assistance

Municipal Assistance Program

Continuing Education

Community Engagement



This tool will help you find diverse stakeholders, explore who has the most power and influence in your community, and determine who has the most interest in your brownfields redevelopment project.



This tool allows you to examine the strengths, weaknesses, opportunities, and threats in your community as they relate to brownfields redevelopment and community engagement.



This tool is designed for municipal officials and nonprofit organizations. It provides different strategies for opening a dialogue and gaining buy-in for affordable housing from community members that are opposed to the idea.



This tool provides an overview what a listening session is, how to plan one for your community, and how they can support your brownfields redevelopment / community engagement goals.



This tool provides a helpful checklist for planning a community meeting, hosting the actual event, and evaluation / follow-up once the meeting is over.



This tool briefly summarizes focus groups and provides some guiding questions to help you get started in hosting one in your community.



REGION 1 TECHNICAL ASSISTANCE TO BROWNFIELDS

tab.program.uconn.edu/community-engagement/

Brownfields

brown•field/noun

a property, the expansion, redevelopment, or reuse of which may be complicated by the presence or potential presence of a hazardous substance, pollutant, or contaminant.
- US EPA



DO YOU HAVE A BROWNFIELD IN YOUR COMMUNITY?



DOES YOUR TOWN/CITY HAVE AN INDUSTRIAL HISTORY?



DO YOU HAVE ANY BUILDINGS BUILT BEFORE THE 1970S?



DO YOU HAVE SITES THAT ARE ABANDONED OR BLIGHTED?

Examples: old mill buildings and industrial sites, old gas stations, public & commercial buildings, agricultural land and facilities, metal salvage yards and illegal dumping sites, and dry cleaners



YES, MY COMMUNITY HAS OR LIKELY HAS BROWNFIELD SITES AND I NEED SUPPORT WITH:

• JUST GETTING STARTED AND IDENTIFYING SITES

• DEVELOPING A PLAN FOR REUSING A BROWNFIELD SITE

• INFORMING THE COMMUNITY

- Answer Questions
- Virtual Consultation
- Technical Doc Review
- Access to Resources
- Webinars & Workshops

- Brownfield Inventory
- Site Reuse Assessment
- Record Review
- Data Gap Analysis
- Community Engagement

Direct Assistance

Municipal Assistance Program

UConn TAB SERVICES

Grant Support

Procurement

- State Grant Review
- EPA Grant Review
- Grant Data Support
- Fall MAP EPA Grant Prep

- Intro Meeting
- RFP Templates
- RFP Examples
- Review & Feedback

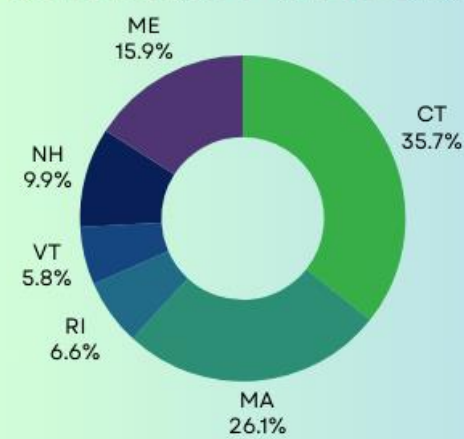
• FINDING FUNDING FOR ASSESSMENT AND CLEANUP OF BROWNFIELDS

• HIRING ENVIRONMENTAL PROFESSIONALS

Send us an email, follow us on LinkedIn, and/or Join our Newsletter to stay informed!

IMPACT AT A GLANCE

COMMUNITY WIDE DISTRIBUTION & SUPPORT



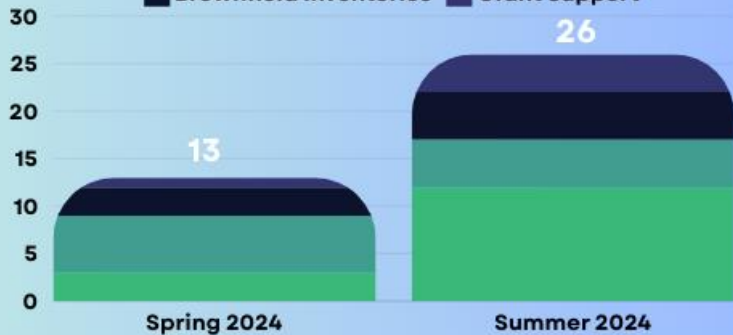
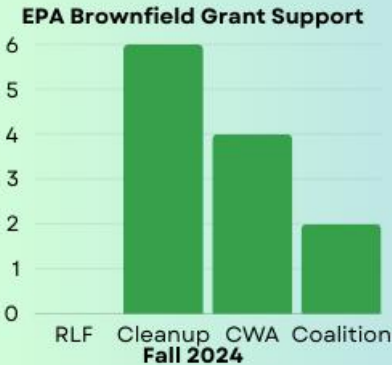
2024 Webinars

- SEEDS Framework
- Stakeholder Analysis
- Procurement Services
- SWOT Analysis
- Past EPA Brownfield Grantees Panel
- Cleanup Grant Tips and Tricks
- Coalition Grant Tips and Tricks
- EPA Grants & Community Engagement
- Public Health Data (Asthma)
- Displacement Strategies
- EPA Grant Office Hours

2024 MUNICIPAL ASSISTANCE PROGRAM

51 PROGRAM PARTICIPANTS

- Gap Analysis & Record Review
- Community Engagement
- Site Reuse Assessment
- Brownfield Inventories
- Grant Support



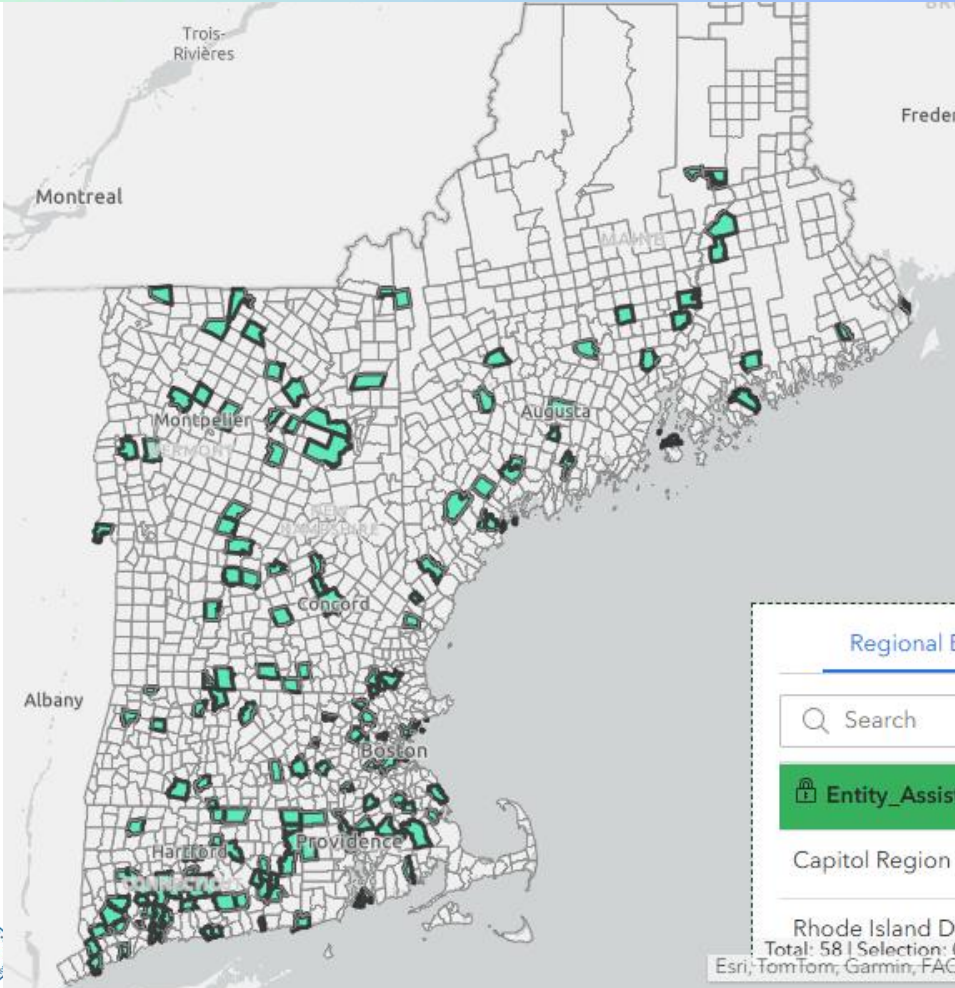
231 COMMUNITIES RECEIVED DIRECT TECHNICAL ASSISTANCE



40% INCREASE IN TA SUPPORT FROM 2023

Outreach, Education, & Community Engagement

- Community Engagement Actions
- Outreach Events
- Educational Activities



RPO Introduction & Talks

Southwest Region Planning Commission (SWRPC), Lakes Regional Planning Commission (LRPC), Strafford Regional Planning Commission (SRPC), Central New Hampshire Regional Planning Commission (CNHRPC), Southern New Hampshire Planning Commission (SNHPC), Nashua Regional Planning Commission (NRPC)



Southwest Region Planning Commission

J.B. Mack



SWRPC





SWRPC BROWNFIELDS ASSESSMENT PROGRAM

- Currently have \$500,000 EPA Brownfield Assessment Grant that started October 1, 2022 and will end on September 30, 2026
- Sites in Greenville, Hinsdale, Keene, New Ipswich, Peterborough, Winchester, Windsor
- Former uses: paper mill, railyard, electric company/gas station/auto repair, drycleaner, tannery, drive in theater and auto recycling center
- Proposed uses: parking, housing, commercial development, community center, solar array, manufacturing, intermodal transportation center
- Funding towards: Phase I ESAs, Phase II ESAs, RAP, HBMs, Visioning/Charrette, Public Health Environmental Screening, Site level brownfield suitability analysis, Site level floodplain analysis



BROWNFIELDS ADVISORY COMMITTEE, STAFF & CONTRACTORS

- Economic Development CEO
 - Selectman
 - Former Selectman
 - Community Development Director
 - Former Health Officer
 - Bank
 - Planning Board Chair/Economic Development Corporation Chairman
 - Town Administrator
 - Town Planner
 - EPA
 - NHDES
 - In past had chemical engineer, civil engineer, architect, realtor, public works director, medical provider, land conservationist
- Program Manager
 - Executive Director
 - Planner
 - Office Manager
- Pinchin
 - BETA Group
 - Devine Millimet



OPPORTUNITIES & CHALLENGES ASSOCIATED WITH CURRENT GRANT

- InvestNH Demolition Grants
- Working with Solar Developers
- Working with Small Towns that Heavily Rely on Volunteers
- Partnership with Monadnock Economic Development Corporation Revolving Loan Fund



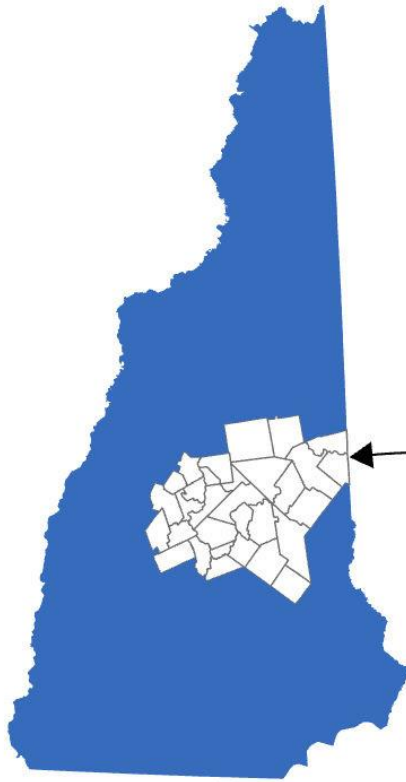
Lakes Regional Planning Commission

Glenn Trefethen



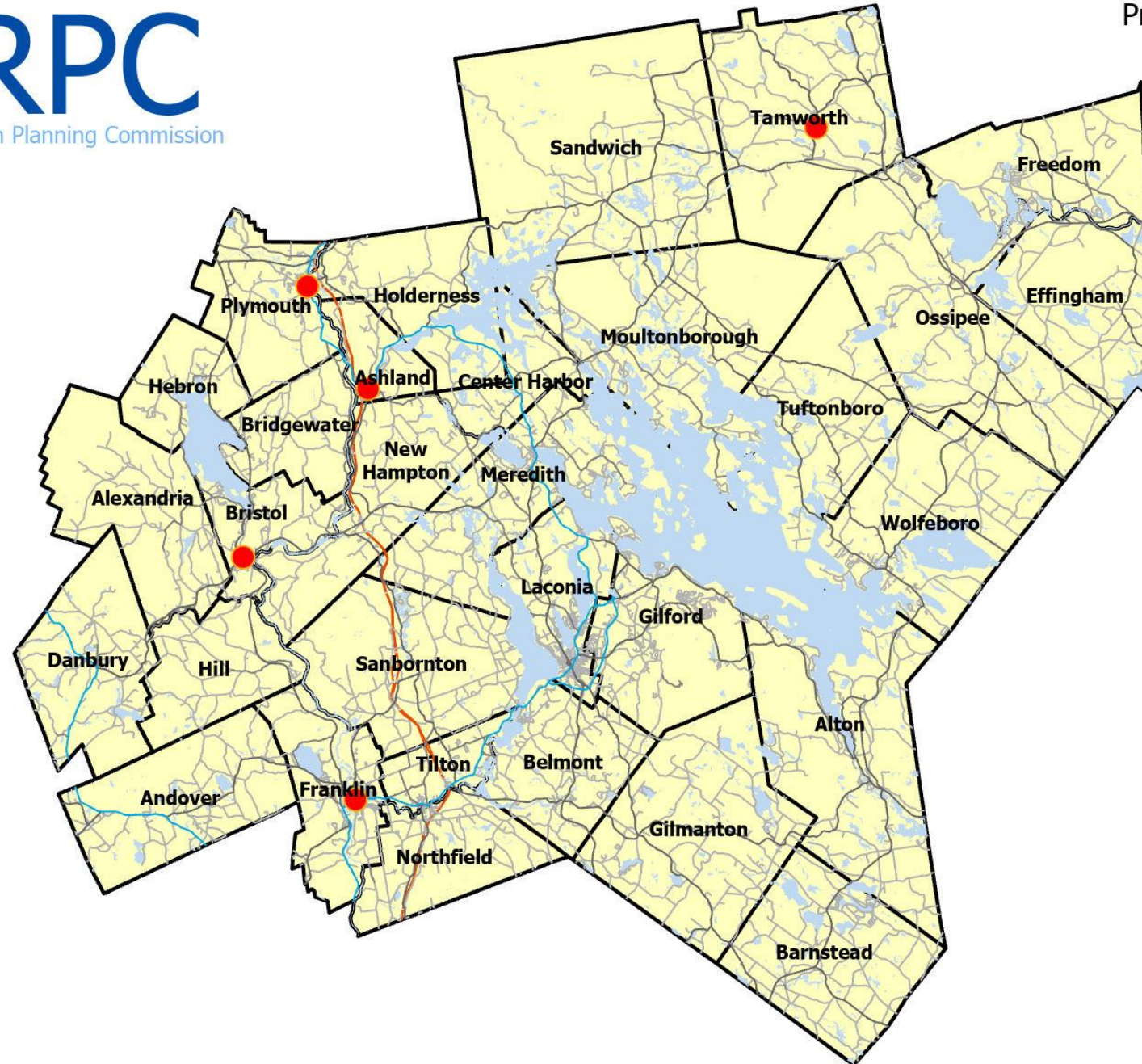
LRPC

Lakes Region Planning Commission



Alexandria	Hebron
Alton	Hill
Andover	Holderness
Ashland	Laconia
Barnstead	Meredith
Belmont	Moultonborough
Bridgewater	New Hampton
Bristol	Northfield
Center Harbor	Ossipee
Danbury	Plymouth
Effingham	Sanbornton
Franklin	Sandwich
Freedom	Tamworth
Gilford	Tilton
Gilmanton	Tuftonboro
	Wolfeboro





Strafford Regional Planning Commission

Lisa Murphy



Central New Hampshire Regional Planning Commission

Matt Monahan



Central New Hampshire Regional Planning Commission

- ▶ A 20-community regional planning commission
- ▶ Secured two assessment grants
- ▶ Assessed multiple petroleum and hazardous sites in approximately five communities within the region
- ▶ Several of these properties secured additional funding from NHDES and EPA
- ▶ Currently working with the Town of Boscawen and their cleanup grant on a site assessed by the CNHRPC grant.
- ▶ Boscawen's assistance has included grant management and public outreach
- ▶ Contact: Matt Monahan; mmonahan@cnhrpc.org; (603) 988-0871

Southern New Hampshire Planning Commission

Cameron Prolman



SNHPC Brownfields Program



- **SNHPC:** Serves 14 municipalities in Greater Manchester area
- **Program Overview**
 - EPA-funded Brownfields Assessment Program
 - Supports Phase I & II Environmental Site Assessments (ESAs)
 - Focus on redevelopment, housing, economic development, and public benefit
 - Region-wide program with a focus on underserved communities



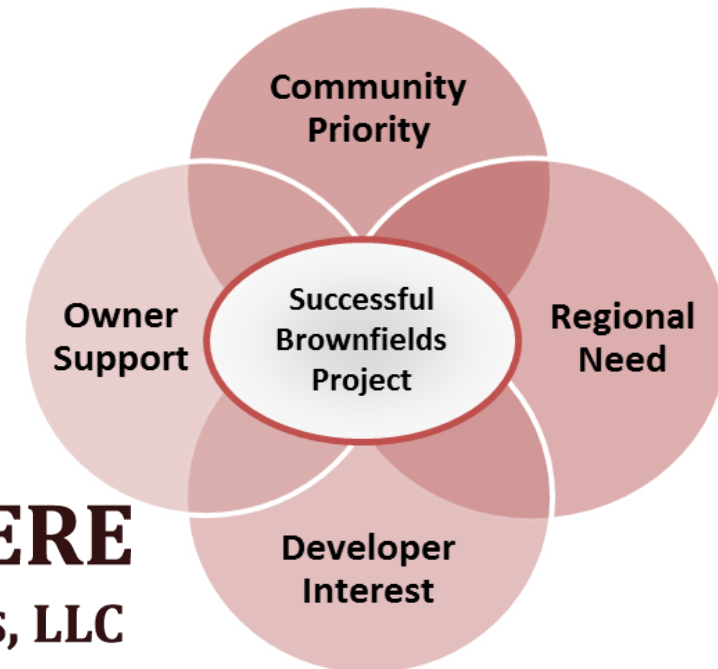
SNHPC Brownfields Program



- **Funding:** \$500,000 EPA Assessment Grant (FY22–FY27)
- **Staff:** Program led by SNHPC with Credere Associates (QEP)
- **Needs**
 - Identify candidate sites in suburban & rural towns
 - Stronger coordination with economic development entities



CREDERE
ASSOCIATES, LLC



SNHPC Brownfields Program



• Recent Active Sites

- Arms Park (Manchester) – Phase I & II, riverfront revitalization
- Hallsville School (Manchester) – Phase I, adaptive reuse potential
- Crotched Mountain East (Francestown) – Phase II, supports demo, solar, wastewater, road realignment



Nashua Regional Planning Commission

Jay Minkarah

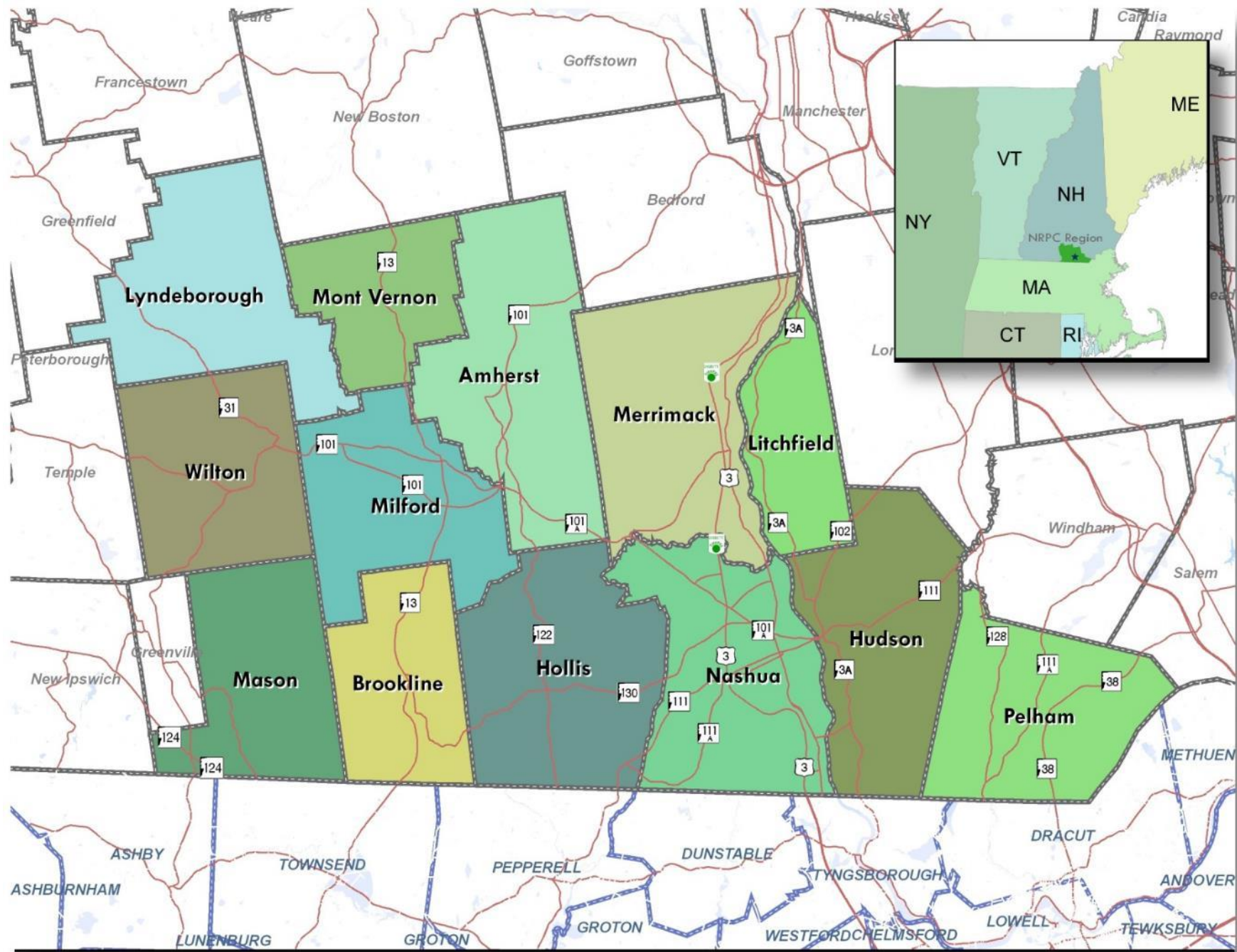


NRPC Brownfields Program

Southern NH Brownfields Roundtable

September 24, 2025





NRPC Brownfields Program

Program Funding

- 2019: \$300,000 Assessment Grant awarded.
- 2022: \$500,000 Assessment Grant awarded.
- 2025: \$500,000 Assessment Grant awarded.
- 2025: \$1,000,000 RLF Grant awarded.

Key Sites Assessed since 2019

- Ultima Nimco – Nashua
- Marjan-Corbin Site – Merrimack
- Former Milford Texaco – Milford
- Former Milford Cabinet Building – Milford
- Abbot Trust Site – Wilton
- Milford Library - Milford
- former Permattach site – Milford
- Abbott Laurel School – Milford
- Police Training Facility – Nashua
- 7 Pine Street Extension – Nashua
- Wilton General Machine & Foundry – Wilton
- Wilton Pressed Metals – Wilton

Former Milford Cabinet 18-units of Affordable Senior Housing



Ultima Nimco Site - Nashua



Existing Conditions



Ultima Nimco Site Interior

Ultima Nimco Site - Nashua



Developer Selected for Mixed-Use/Housing Redevelopment

Former Milford Texaco Site



Redevelopment plan for municipal parking



Wilton Pressed Metals Site



Wilton Pressed Metals Site Interior



Wilton Falls Site

Break

Return by 10:20 AM



SWRPC



Brownfield Success Stories Panel

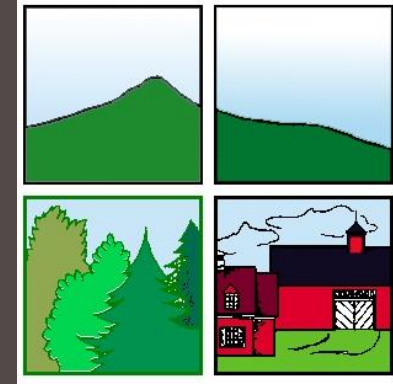
J.B. Mack (SWRPC), and Todd Bridgeo (Weston & Sampson), Adam Roy (Nobis Group)



SWRPC BROWNFIELDS ASSESSMENT PROGRAM

CELEBRATING 22 YEARS OF SUCCESS

Brownfields Roundtable
Manchester Community College
1066 Front Street, Manchester, NH 03102
September 24, 2025



7 KEYS TO SUCCESS

1. Brownfields & RPCs – It Just Makes Sense
2. SWRPC Face of Program
3. Roll Up Sleeves Approach
4. Ongoing Outreach
5. Active Brownfields Advisory Committee
6. Strong Relationships With Towns and Nonprofits
7. Strong Partnership with Environmental Protection Agency and NH Department of Environmental Services

LED TO PRIVATE INVESTMENT

Former Use

1. Auto Repair/Gas Station, Greenfield
2. Drycleaning Business, Jaffrey
3. Railyard, Keene
4. Landfill, Keene
5. G.A.R. Hall, Peterborough
6. Convenience Store/Gas Station, Stoddard
7. Gas Station/Auto Repair, Surry
8. Gas Station/Auto Repair, Winchester
9. Paper Mill, Winchester
10. Gravel Pit, Winchester

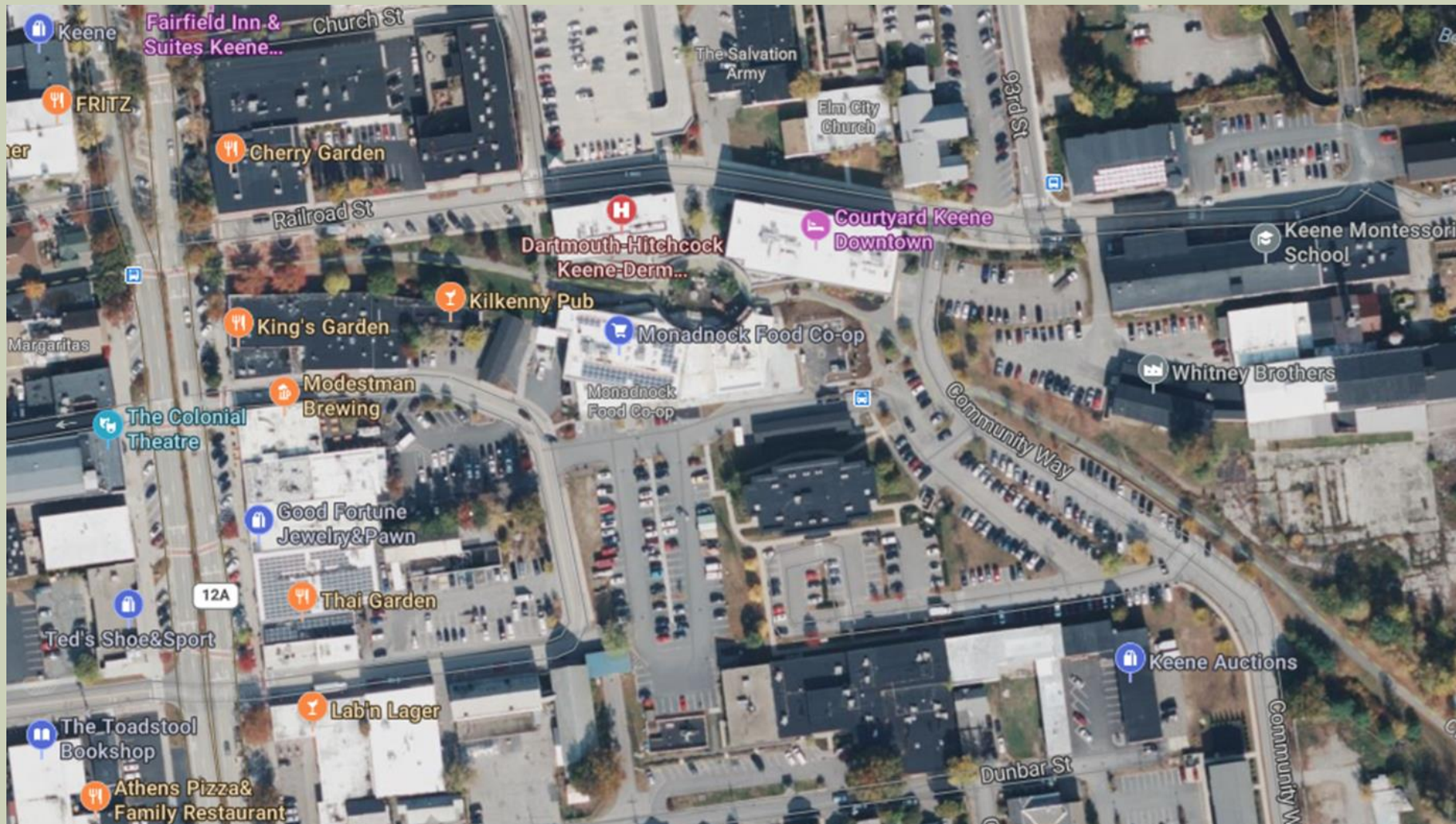
New Use

1. Flag Leaf Bakery/Greenfield Forge
2. Housing
3. Hotel, Restaurant, Offices, Condos
Monadnock Food Coop
4. Froling Energy
5. Post & Beam Brewing
6. Mill Village Country Store & Deli
7. Property Management Business
8. Hall & Son Auto Repair
9. Warehouse
10. Stone Mountain Business Park

RAILROAD LAND



RAILROAD LAND, KEENE



LED TO COMMUNITY INSTITUTIONS & PUBLIC ASSETS

Former Use

1. Old Theater, Jaffrey
2. Businesses/Residential/ Parking Lot, Keene
3. Railyard, Keene
4. Auto Repair Business, Keene
5. Railyard, Peterborough
6. Armory, Peterborough
7. Library, Peterborough
8. Electroplating Business, Walpole

New Use

1. New Park Theater
2. Cheshire County Courthouse Annex
3. Southwestern Community Services HQS, Headstart Facility, Senior Housing
4. Homeless Shelter
5. Public Parking, Bus Stop, EV Charging
6. Community Center
7. Library Addition
8. Public Parking, EV Charging

PARK THEATRE, JAFFREY



Photo 6 (6-24-13): UST cleaned and staged for offsite disposal.



LED TO GREENSPACE

Former Use

1. Polystyrene Insulation Manufacturer, Marlborough
2. Thermometer Factory, Peterborough
3. Golf Club, Peterborough
4. Railyard, Peterborough
5. Electroplating Business, Walpole

New Use




1. Greenspace/buffer
2. Rotary Wilder Park
3. Non-profit owned greenspace
4. Public Park Space in Depot Square
5. Public Park Space in Walpole Village

ROTARY WILDER PARK, PETERBOROUGH



The proper regulation of temperature and moisture in the school room calls first for an accurate guide.
Many Schools and other Public Buildings are equipped with

WILDER
TROY, N.Y.
ACCURATE THERMOMETERS
AND
HYGROMETERS

Minimum Thermometer 1418 Hygrometer Golden Thermometer 1392

THIS IS A MATTER OF HEALTH.
BE ACCURATE.
Write for further particulars.
THE WILDER-PIKE THERMOMETER CO.
TROY, N. Y., U. S. A.



IN PLANNING STAGES

Former Use

1. Circuit Board Manufacturer, Chesterfield
2. Miscellaneous Businesses, Greenville
3. Paper Mill, Hinsdale
4. Former Drive In Theater, Keene
5. Railyard, Keene
6. Tack Factory, Jaffrey
7. Highway Garage/Gas Station/Electric Company, New Ipswich
8. Blanket Factory, Troy
9. Auto Recycling Facility, Windsor

Proposed New Use

1. Public Park
2. Parking/Public Park/Housing
3. Residential/ Commercial
4. Manufacturing Facility
5. Intermodal Transportation Center/Housing/Retail
6. Residential/ Commercial
7. Commercial
8. Residential
9. Well Drilling/Fracking Business

INTERMODAL TRANSPORTATION CENTER CONCEPT, KEENE



NO USE FOUND TO DATE

Former Use

1. Convenience Store and Gas Station, Chesterfield
2. Manufacturing Plant, Keene
3. Gravel Pit/Machinery Storage, Keene
4. Shooting Range, New Ipswich
5. Convenience Store and Gas Station, Richmond
6. Tannery, Winchester
7. Paper Waste Pit, Winchester

Original Proposed Use

1. Convenience Store
2. Residential/Commercial
3. County Nursing Home
4. Substance Abuse Treatment Facility
5. Convenience Store and Gas Station
6. Solar Array
7. Solar Array

QUESTIONS?

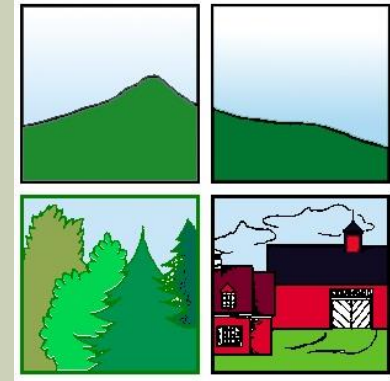
J. B. Mack

Assistant Director

(603) 357-0557

jbmack@swrpc.org

www.swrpc.org/brownfields



Targeted Brownfields Assessments: A Launch Pad for Brownfields Success Stories

Adam Roy, LSP, CHMM
Director of Federal Services



our company

Established in 1988, Nobis Group is a 100% Employee-Owned consulting firm committed to sustainability and creating healthy, vibrant communities while providing engineering and environmental solutions to public and private sector clients throughout the eastern United States. We specialize in civil engineering, geotechnical engineering, and environmental services, united by this shared vision.



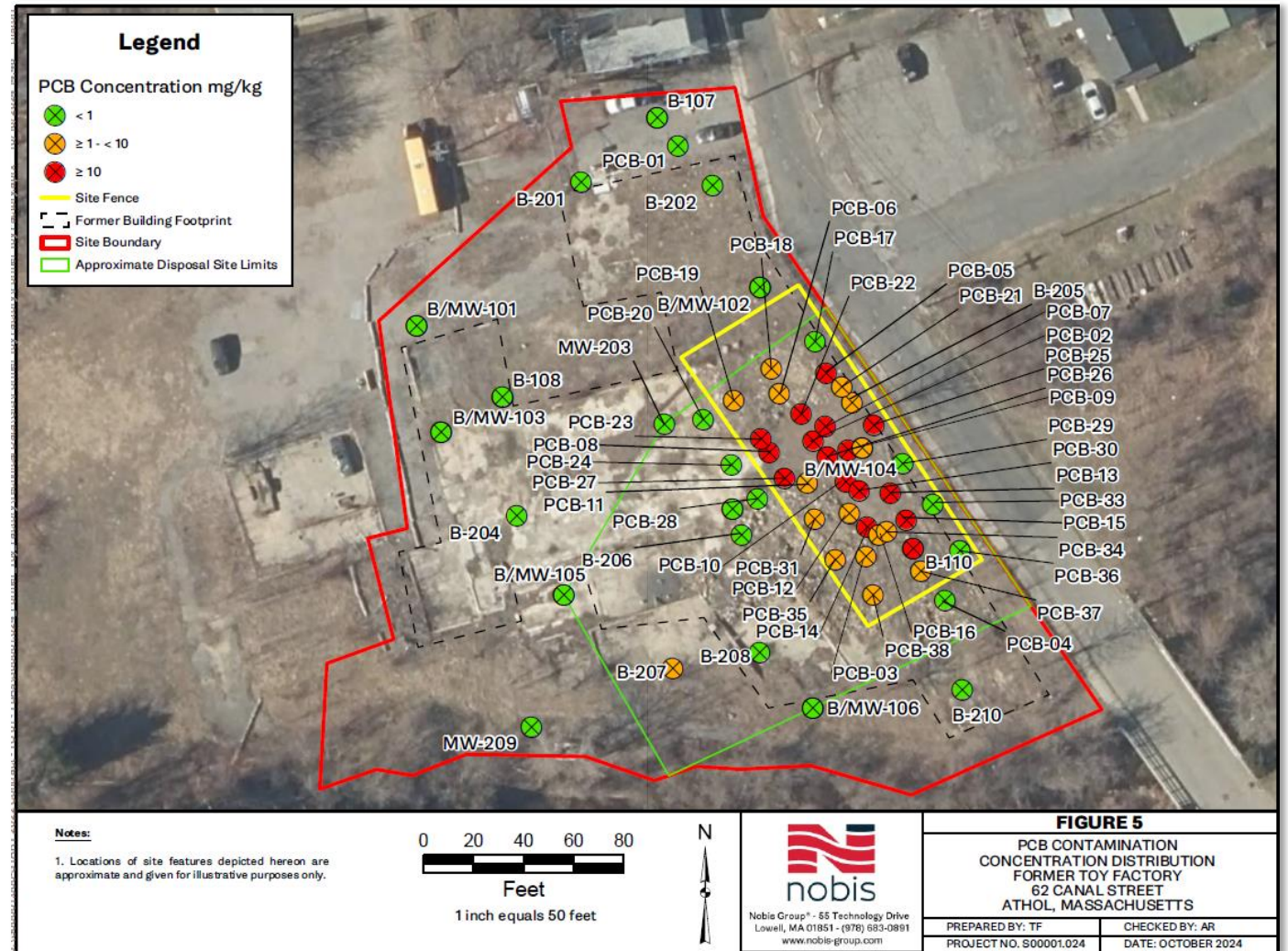
office locations: NH (HQ) | MA | NJ | VT
nobis-group.com



- **Free Technical Assistance**
- **Reduces Uncertainty**
- **Includes Environmental Assessments and Evaluations of Cleanup Alternatives and Costs**
- **Supports Redevelopment Planning and Economic Development**
- **Promotes Public Health and Safety**
- **Encourages Economic Development**
- **Improves Property Values and Tax**



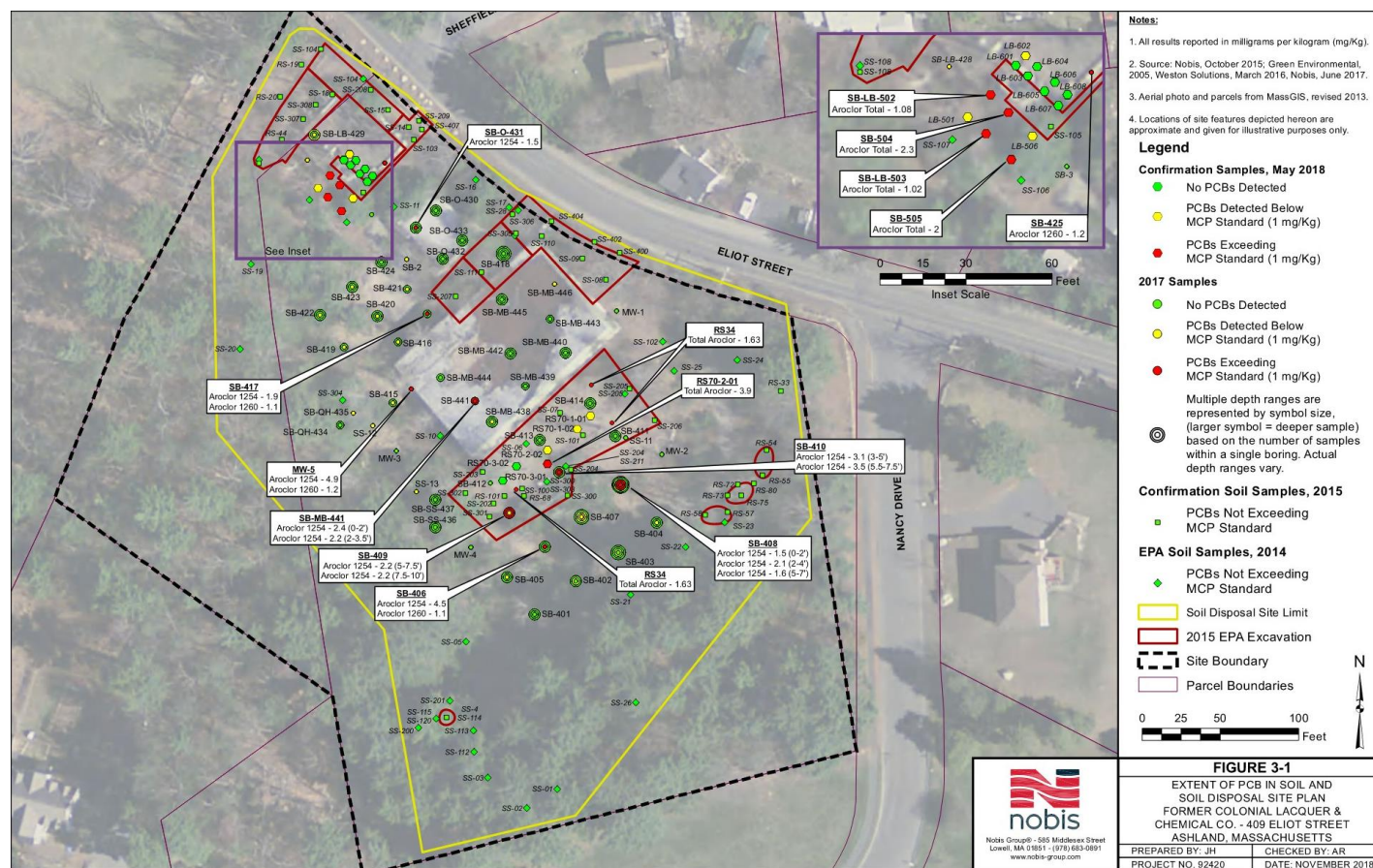
- TBAs performed using funding supplied by Montachusett Regional Planning Commission and U.S. EPA
- PCB contamination required Immediate Response Actions (IRA) under the MCP
- MassDEP provided contractor and funding to install temporary fencing
- EPA will perform a Time Critical Removal Action to Remediate Soil





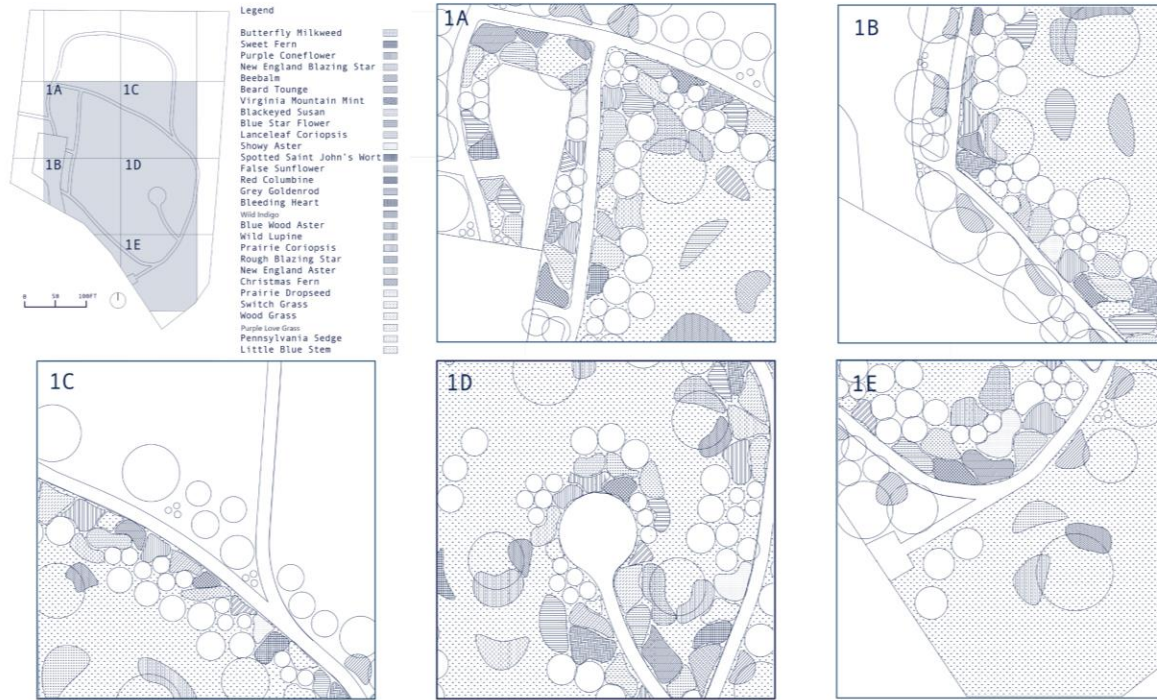


- TBAs performed using funding supplied by U.S. EPA
- PCB contamination required Immediate Response Actions (IRA) under the MCP
- EPA performed a Time Critical Removal Action to Remediate PCB Impacted Soil
- With Site delineated and partially remediated – Town moved forward with Tax Title Taking to demolish existing site buildings and final remediation to get site closure.





Cadillac Property Meadow Planting Plan





THANK YOU

aroy@nobis-group.com

(978) 703 6014

nobis-group.com

@NobisGroup



Add me as a contact by scanning the QR
code!





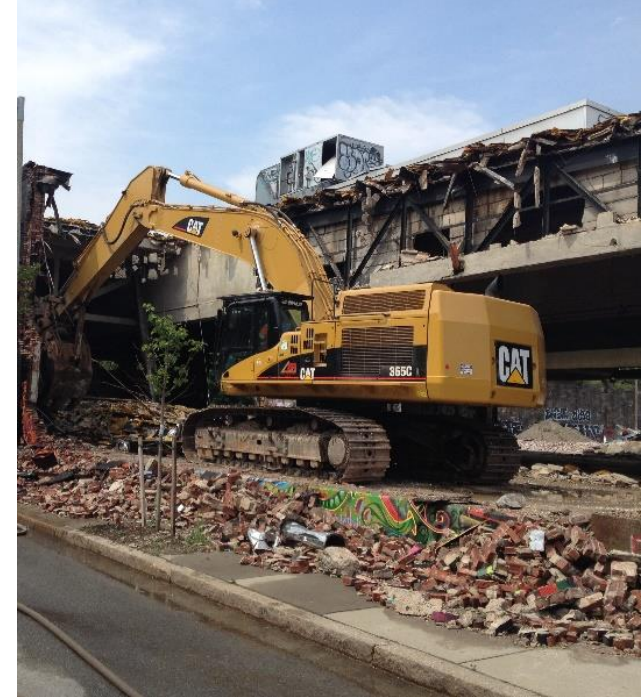
UNLOCKING POSSIBILITIES: COLLABORATIVE PATHWAYS TO BROWNFIELDS REDEVELOPMENT

New Hampshire Brownfields Roundtable

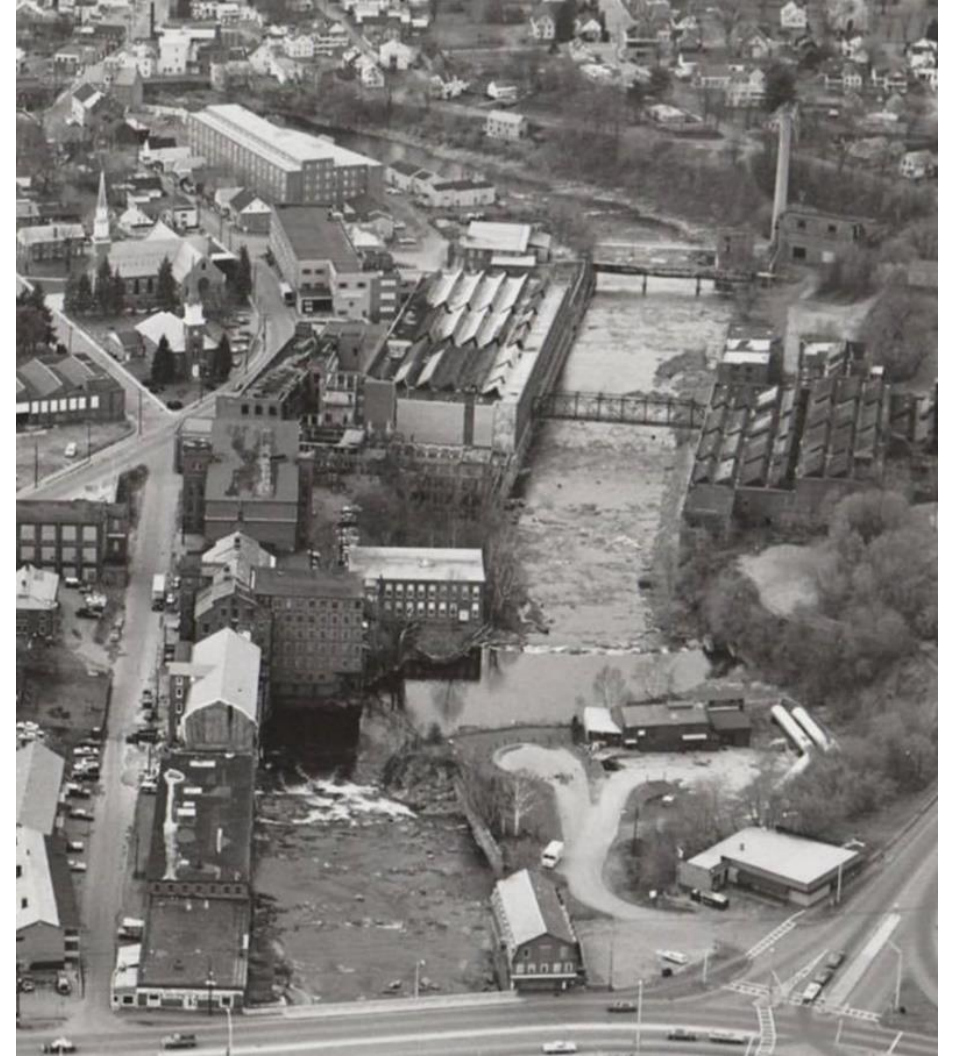
24 September 2025

Todd Bridgeo, PE, LSP
Team Leader

What Would
Success Look
Like For Your
Project?



Claremont, New Hampshire



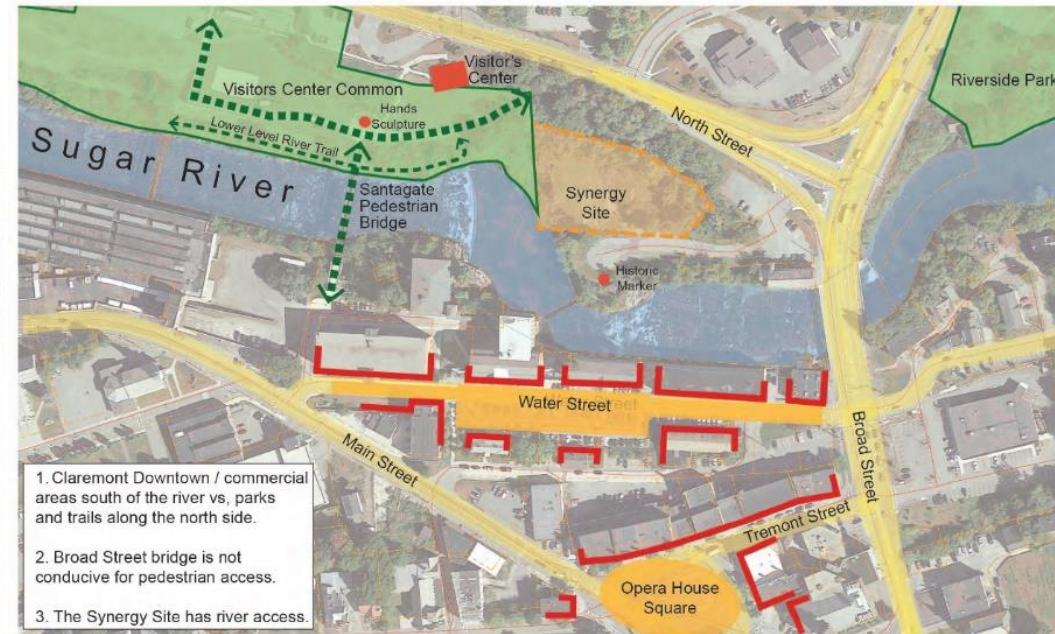


LEGEND

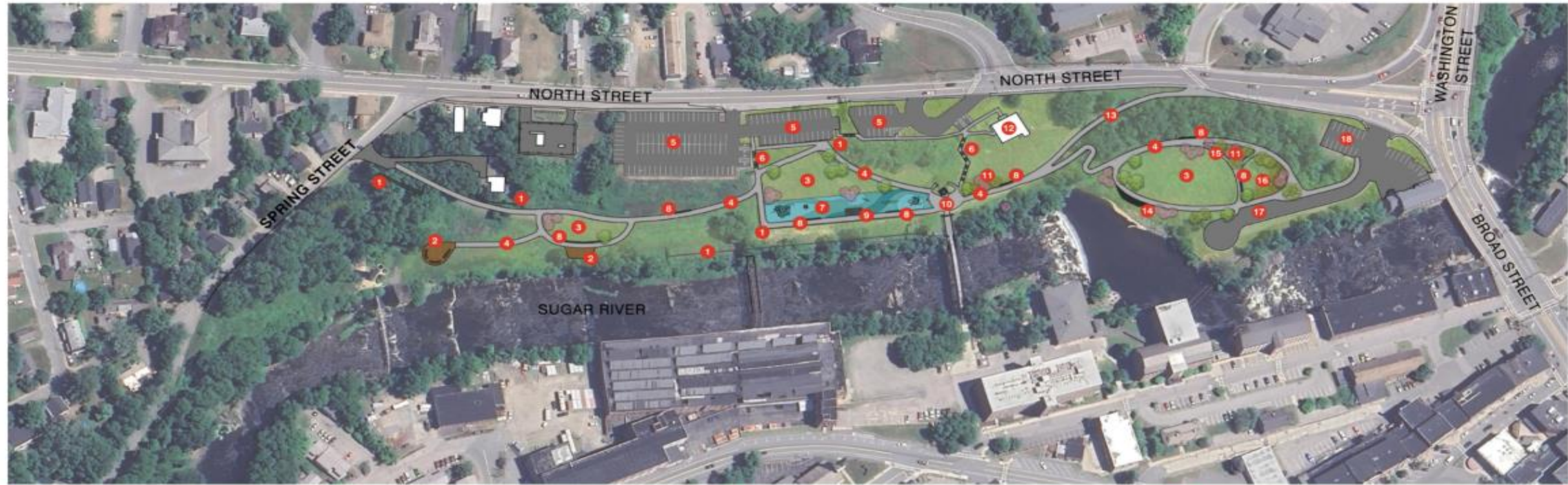
- Synergy Gas Property
- Site
- Old Joy Manufacturing Property

FIGURE 2	
SUGAR RIVER LAND SITES CLAREMONT, NEW HAMPSHIRE	
SITE PLAN	
APRIL 2023	SCALE: NOTED

Claremont, New Hampshire



LANDSCAPE MASTER PLAN CONCEPT: OCTOBER 5, 2024



VIEW OF SHADE STRUCTURE WITH SWINGING BENCH



VIEW OF 10' ADA PATH & MULTI-PURPOSE OPEN LAWN AREA



VIEW OF CHILDREN'S PLAY ZONE & RUSTIC GRANITE SEATING STEPS



VIEW OF RAIN GARDEN & MULTI-PURPOSE OPEN LAWN AREA



- 1 EXISTING RETAINING WALL TO REMAIN
- 2 COMPOSITE WOOD OBSERVATION PLATFORM
- 3 MULTI-PURPOSE OPEN LAWN AREA
- 4 10' WIDE ADA BITUMINOUS CONCRETE PATH

- 7 CHILDREN'S PLAY ZONE
- 8 RUSTIC GRANITE SEATING
- 9 SHADE STRUCTURE WITH SWINGING BENCH
- 10 EXISTING OVERLOOK AND SCULPTURE TO REMAIN

- 13 10' WIDE NON-ADA BITUMINOUS CONCRETE PATH
- 14 RUSTIC GRANITE SEATING STEPS WITH VIEWS DOWN TO RIVER
- 15 6' WIDE INTERIOR BITUMINOUS CONCRETE PATH
- 16 POLLINATOR GARDEN/NATIVE PLANTING AREA



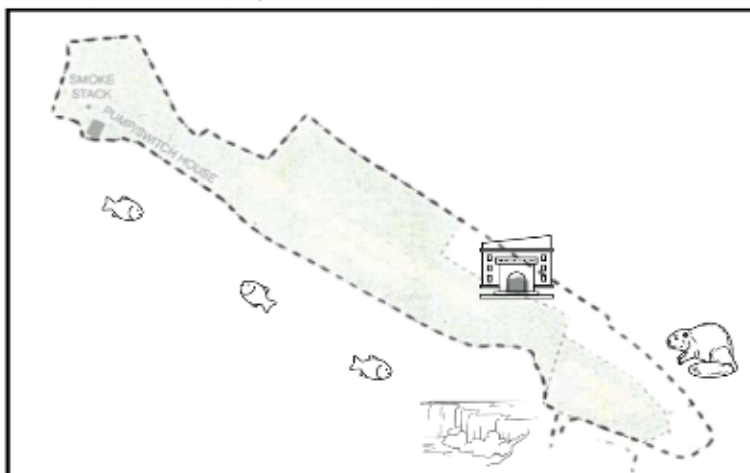
Claremont, New Hampshire



Draw your vision for Claremont's Sugar River Waterfront Brownfields Project

What do you imagine for this area?
Color and draw the ideas that
you would like to see!

Need more time? Take this page home to finish it and ask your favorite adult to email a scanned copy or clear picture to nmerrill@claremontnh.com. Or, drop it off at the Visitor Center, 14 North Street, Claremont NH when it's done!



FOR THE ADULTS:

Find More
Info Online

SCAN QR CODE WITH A
SMARTPHONE CAMERA



<https://www.claremontnh.com/sugar-river-lanoll>



Weston & Sampson
transform your environment



Though this program has been
funded, wholly or in part, by
EPA, the contents of this
document do not necessarily
reflect the views and policies
of the EPA.



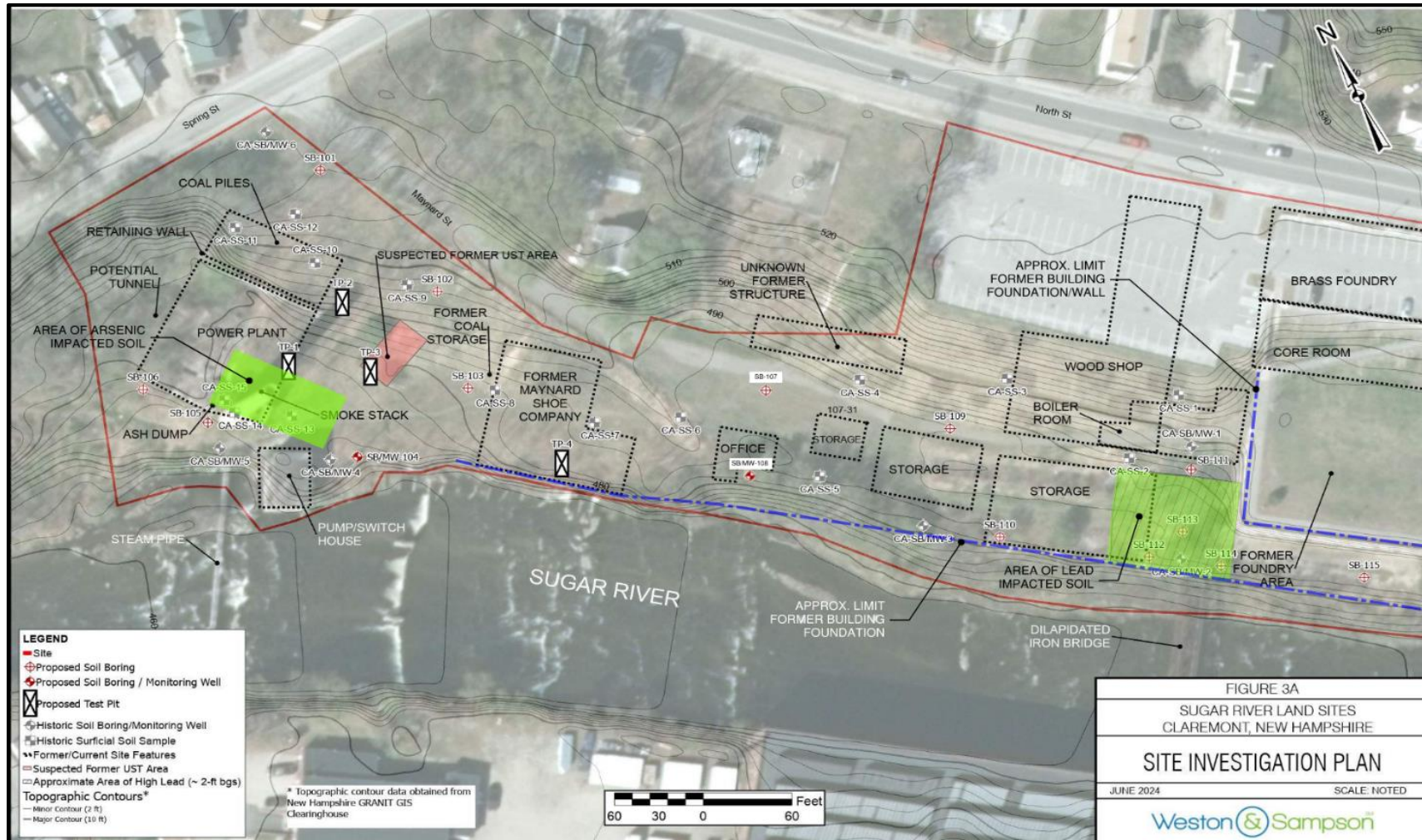
Claremont, New Hampshire



LANDSCAPE MASTER PLAN FOCUS AREA CONCEPT: FULL DESIGN



Claremont, New Hampshire



Key Take Aways



01

Define the Destination & Understand the Path

02

Partnerships & Engagement Drive Direction

03

Collaboration Lightens the Lift

Environmental Protection Agency (EPA) Programs and Funding Opportunities

EPA Region 1

Jim Byrne and Meena
Mortazavi



EPA BROWNFIELDS PROGRAM



Jim Byrne and Meena Mortazavi

EPA Region 1

September 2025



Boscawen, NH

What is a Brownfield?

- A property might be a “brownfield” due to potential contamination from past uses that is inhibiting continued use or reuse of the site. Brownfields are often concentrated in historically underserved communities.

Brownfield sites might include:

- Former gas stations
- Former industrial sites
- Former dry cleaners
- Old buildings
- Vacant lots
- Historic mills or factories

<https://www.epa.gov/brownfields/understanding-brownfields>

ELIGIBLE ENTITIES FOR EPA GRANTS

- General Purpose Unit of Local Government
- Land Clearance Authority
- Government Entity Created by State Legislature
- Regional Council or group of General-Purpose Units of Local Government
- Redevelopment Agency that is chartered or otherwise sanctioned by a state
- State
- Federally recognized Indian tribe other than in Alaska
- Nonprofit organization described in section 501(c)(3) of the Internal Revenue Code
- Qualified community development entity as defined in section 45D(c)(1) of the Internal Revenue Code of 1986



<https://www.epa.gov/brownfields/eligibility>

SUMMARY OF GRANT PROGRAMS FOR ASSESSMENT AND CLEANUP

Grant Type	Description
Assessment (CW/Coalition)	To develop inventory, characterize, and conduct assessments to determine if sites are contaminated (if so, to what extent), perform community involvement, and plan for cleanup
Cleanup	For eligible municipalities and nonprofits to clean up contaminated properties
Revolving Loan Fund	For larger organizations to capitalize funds for issuing cleanup loans and subgrants
Multipurpose	For a flexible range of planning, assessment, and cleanup activities within a certain target area

Grant Guidelines and Resources:

<https://www.epa.gov/brownfields/marc-grant-application-resources>

JOB TRAINING GRANTS

Competitive grants that recruit, train, and place unemployed/under-employed residents of communities affected by brownfields and other issues in jobs within the environmental field

Training topics can include:

- Waste Site Cleanup
- Health & Safety
- Heavy Equip. Operator/CDL
- Wastewater Treatment
- Asbestos Abatement
- Lead Paint/RRP
- Stormwater/infrastructure management

<https://www.epa.gov/brownfields/brownfields-job-training-grants>





STATE AND TRIBAL FUNDING

- Under CERCLA 128(a), EPA provides non-competitive grants annually to states and tribes to operate and manage a Brownfields Program
- This funding allows them to conduct the following brownfields activities:
 - Inventory of sites on state or tribal land
 - Oversee brownfields resources and enforce state/tribal authority
 - Provide opportunities for local stakeholders' meaningful participation in brownfields decisions
 - Approve site cleanup plans, and verify/certify that cleanup goals are completed

TECHNICAL ASSISTANCE PROGRAMS

- In addition to the assessment and cleanup grants of the Brownfields and Land Revitalization Program, there are various free resources available to help inform assessment, cleanup, and reuse decisions.
- These technical assistance programs can help further the success of a brownfield investment, particularly considering things such as market analyses, sustainable development, and extreme weather resiliency. This can help bring both project success and broad, long-lasting benefits to a community.

Land Revitalization
TA Program

Technical
Assistance to
Brownfields (TAB)
Programs

Targeted
Brownfields
Assessment (TBA)
Program

<https://www.epa.gov/brownfields/technical-assistance>

TECHNICAL ASSISTANCE TO BROWNFIELDS (TAB) PROGRAMS

Region I: [University of Connecticut \(UConn\) TAB](#)

National TABs:

- [Kansas State University](#) – TA for Tribal Nations
- [Center for Community Progress](#) – Land Banking TA
- [Groundwork USA](#) – Brownfields and Land Use TA
- [UMass Dartmouth](#) – BRADS Program
- [Tetra Tech](#) – Job Training TA
- [Grow America/ICMA](#) – Brownfields RLF TA

Program	CT	ME	MA	NH	RI	VT	Total
Assessment Grants	\$27,234,106	\$39,938,605	\$53,878,276	\$18,455,191	\$9,792,015	\$23,316,383	\$172,614,576
Revolving Loan Fund (RLF) Grants	\$37,729,995	\$66,766,683	\$49,285,000	\$12,776,790	\$7,690,000	\$26,443,700	\$200,692,168
Cleanup Grants	\$24,651,773	\$44,623,594	\$56,936,193	\$11,373,250	\$12,161,685	\$7,690,000	\$157,436,495
Multipurpose Grants	\$1,350,000	\$800,000	\$1,800,000	\$1,800,000	\$0	\$1,000,000	\$6,750,000
Job Training Grants	\$4,140,264	\$200,000	\$4,031,087	\$0	\$1,142,300	\$0	\$9,513,651
Area-Wide Planning Grants	\$0	\$575,000	\$925,000	\$0	\$200,000	\$200,000	\$1,900,000
EPA Targeted Assessments (TBA)	\$6,494,494	\$4,150,873	\$11,557,821	\$1,594,545	\$920,769	\$1,234,532	\$25,953,034
State & Tribal Funding	\$22,536,929	\$30,127,031	\$29,900,170	\$25,787,775	\$23,859,789	\$16,295,477	\$148,507,171
Small Technical Assistance Grants for States & Tribes	\$0	\$20,000	\$0	\$20,000	\$0	\$40,000	\$80,000
Showcase Communities	\$300,000	\$0	\$800,000	\$0	\$300,000	\$0	\$1,400,000
Total	\$124,437,561	\$187,201,786	\$209,113,547	\$71,807,551	\$56,066,558	\$76,220,092	\$724,847,095
Funding totals current as of November 2024							

CUMULATIVE FUNDING

<https://www.epa.gov/brownfields/funding-history-brownfields-and-land-revitalization-new-england>

REGION I BROWNFIELDS BY THE NUMBERS

FY06-FY25

- \$724,847,095 in New England funding since the Brownfields Program inception
- 3,791 sites assessed
- 1,055 sites cleaned up/made ready for re-use (totaling over 10,044 acres)
- Over 24,500 jobs leveraged
- Over \$4.5B leveraged from cleanup, construction, and redevelopment of brownfields (almost 8:1 multiplier effect)

Source: Grantee-reported Data as of April 9, 2025

FY26 BROWNFIELDS PROGRAM SCHEDULE

- FY25 Assessment, Revolving Loan Fund, and Cleanup (ARC) projects start October 2025
- FY26 Multipurpose, Assessment, and Cleanup (MAC) Competition Guidelines Anticipated to be Released September 2025
 - Grant Guidelines Released September 2025
 - Applications Due November 2025
 - Awards Announced Spring 2026
 - Projects start October 2026



EPA ARC GRANT TRAININGS

EPA Grant Guideline Outreach Webinars – FY26 Narrative Ranking Criteria

- October 21, 12:00-2:00pm - Assessment and Multi-Purpose Grants
- October 23, 12:00-2:00pm - Cleanup Grants

EPA Region I's Notice of Funding Opportunity (NOFO) Outreach Trainings

- November 4 - Assessment Grants (time TBD)
- November 5 - Multi-Purpose Grants (time TBD)
- November 6 - Cleanup Grants (time TBD)

MAC Grant Application Guidelines and Resources:

<https://www.epa.gov/brownfields/marc-grant-application-resources>

Types of EPA Brownfields Funding:

<https://www.epa.gov/brownfields/types-funding>



Subscribe to the RI
Brownfields' What's
New Mailing List for
additional trainings and
information

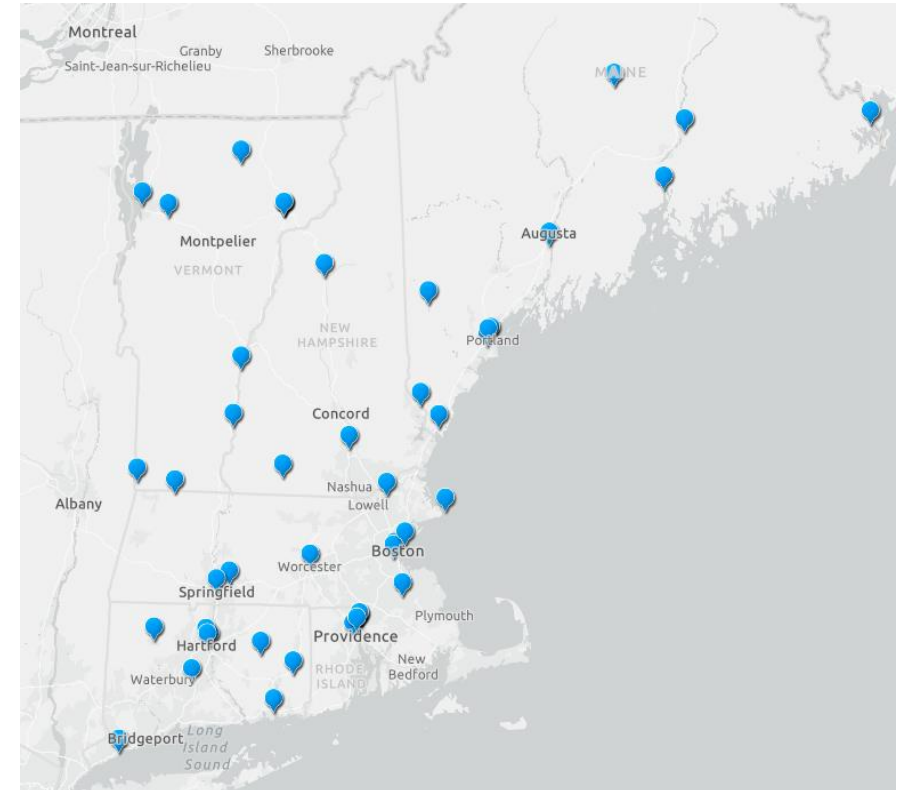
LINKS/RESOURCES

[RI Brownfields Web Site](#)

[Success Stories - Story Map](#)

[Team Contact List](#)

[Funding History](#)



Region I Brownfields Success Story Mapping Tool

CONTACT INFORMATION

Meena Mortazavi 617-918-1488

Mortazavi.Meena@epa.gov

Jim Byrne 617-918-1389

Byrne.James@epa.gov

Region 1 RLF TAB

Erin Howard



SWRPC



April 2025

Introducing the EPA RLF TAB



Meet Grow America

Who we are

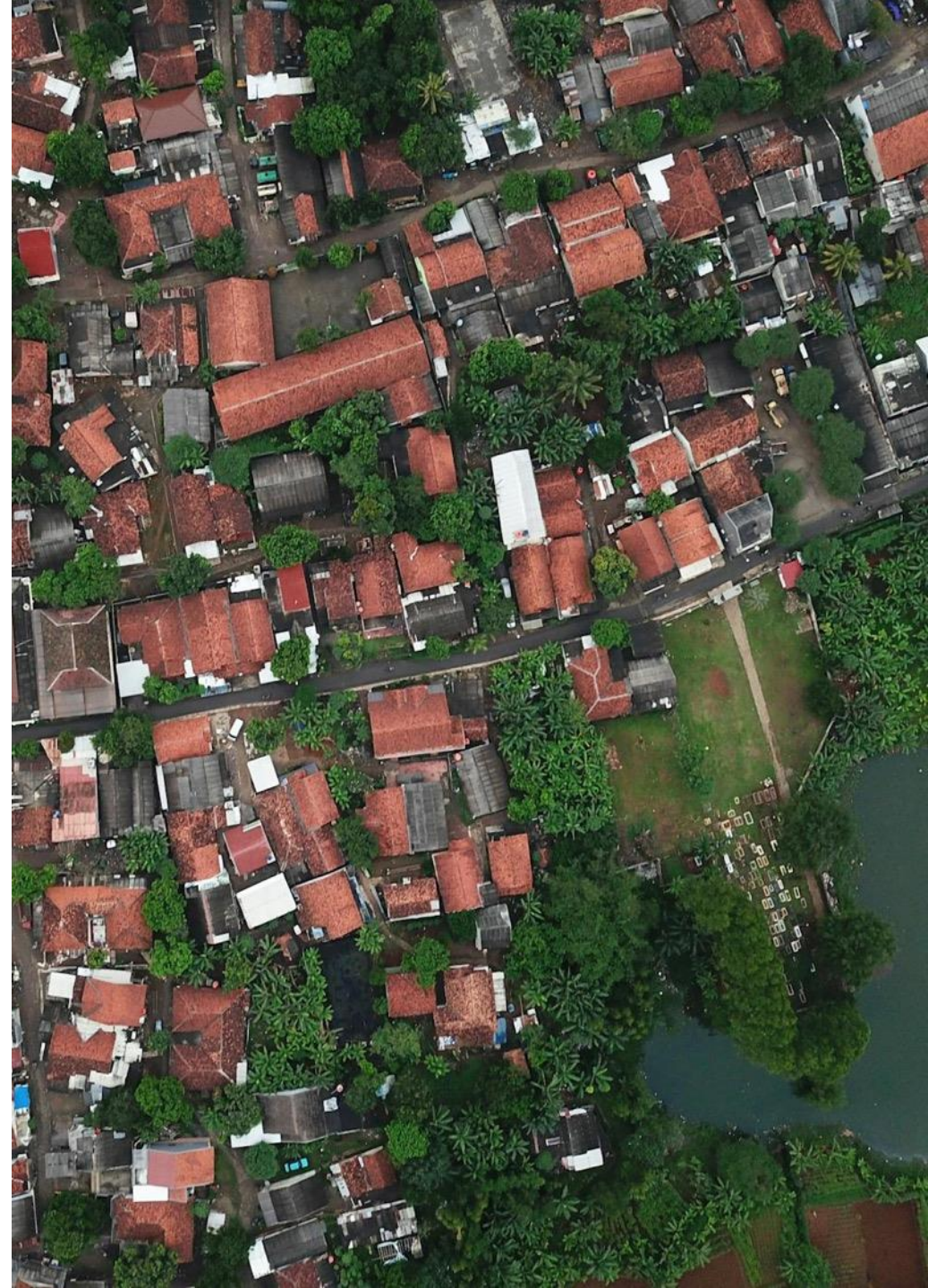
- Established in 1969, Grow America is the nation's oldest non-profit provider of community development technical assistance and training
- We direct capital to support the development and preservation of affordable housing, the creation of jobs through training and small business lending and the advancement of livable communities
- We work in partnership with local and state governments and non-profits to build communities, economies, and capacity with hands-on technical assistance



Meet our partner:

International City/County Management Association (ICMA)

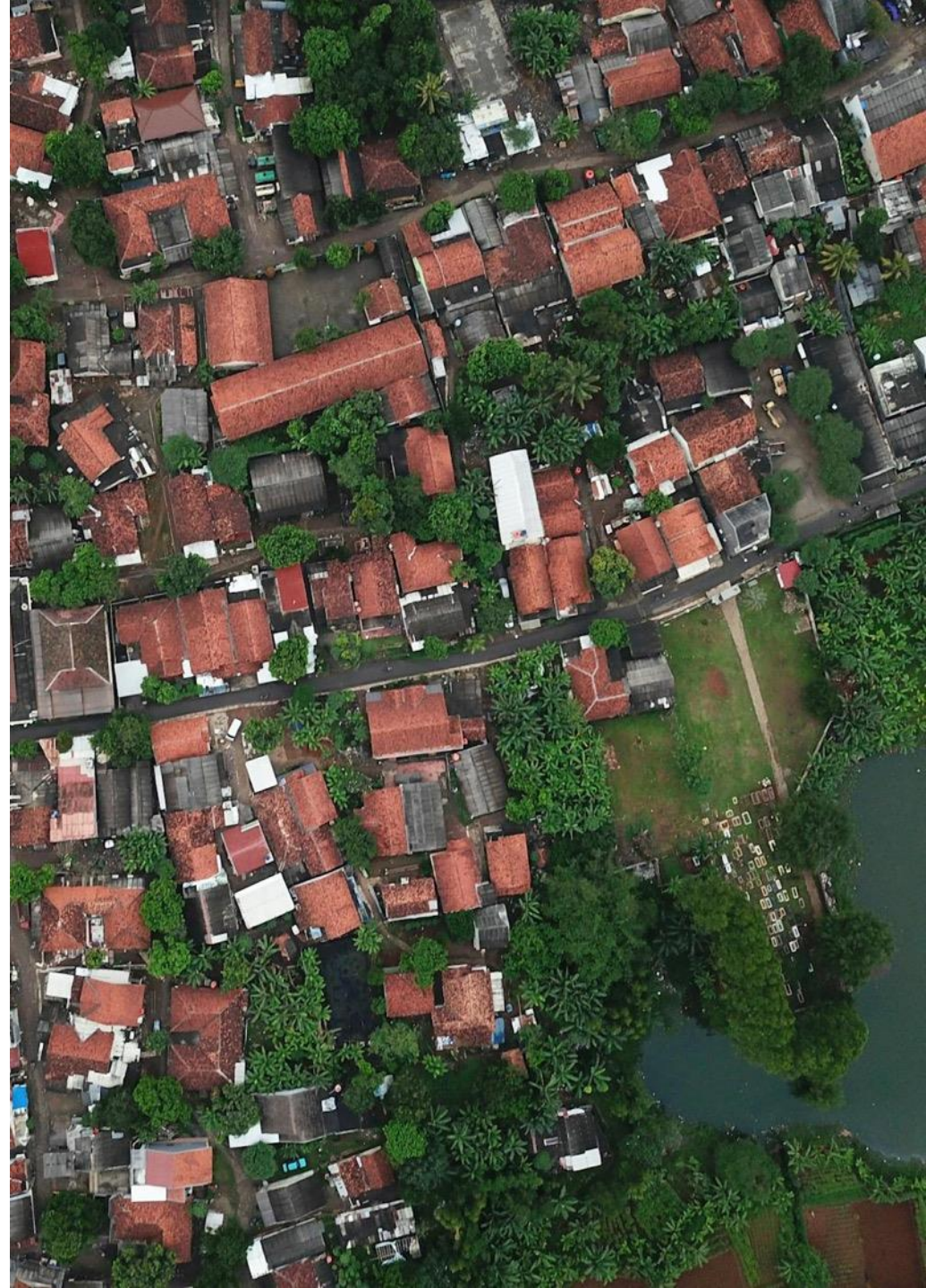
- Founded in 1914, ICMA—the International City/County Management Association—is the premier professional association for local government leaders, managers, staff, and stakeholders with more than 13,000 members
- ICMA frequently partners with federal agencies, foundations, and international donors to help local governments create thriving, equitable, and resilient communities, including the following projects among others



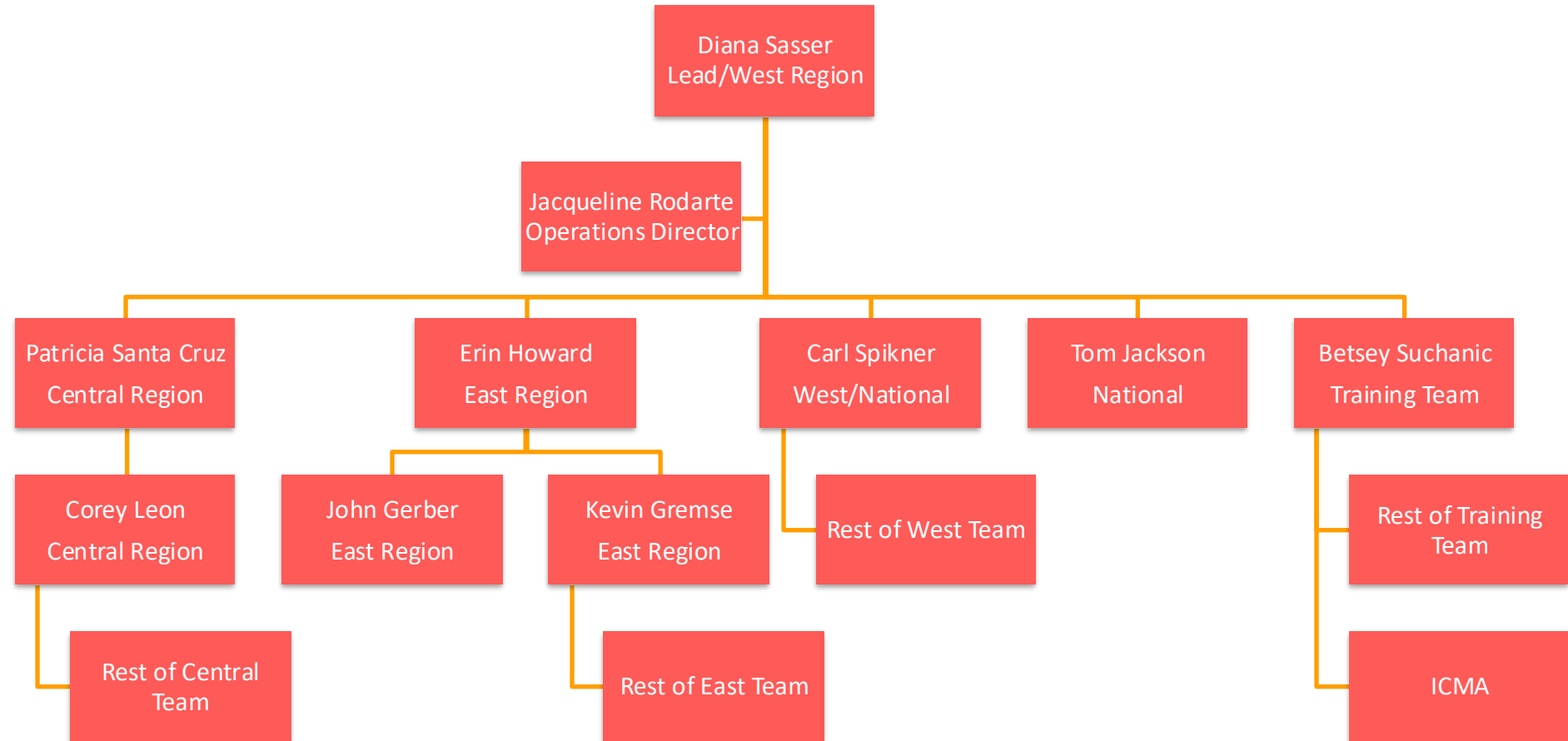
Meet our partner:

International City/County Management Association (ICMA)

- Founded in 1914, ICMA—the International City/County Management Association—is the premier professional association for local government leaders, managers, staff, and stakeholders with more than 13,000 members
- ICMA frequently partners with federal agencies, foundations, and international donors to help local governments create thriving, equitable, and resilient communities, including the following projects among others



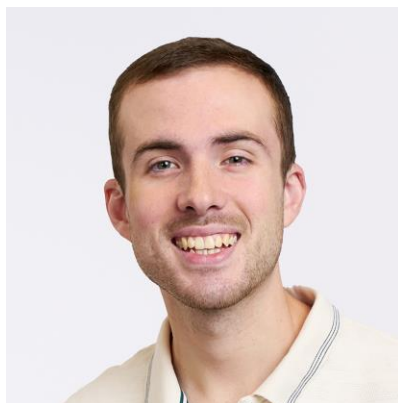
→ EPA RLF TAB team



East Coast Team



Erin Howard
East Region
RLF Lead
Field Director



John Gerber
East Region
Associate Field
Director



Kevin Gremse
East Region
Team Leader
Managing
Director

EPA Funding for Brownfields

Revolving Loan Fund Grants

- Can loan to public or private developers
- Grantee determines loan terms
- Five-year performance period
- Provides up to \$1,000,000

Fast Facts: Brownfield Revolving Loan Fund Assistance Agreements

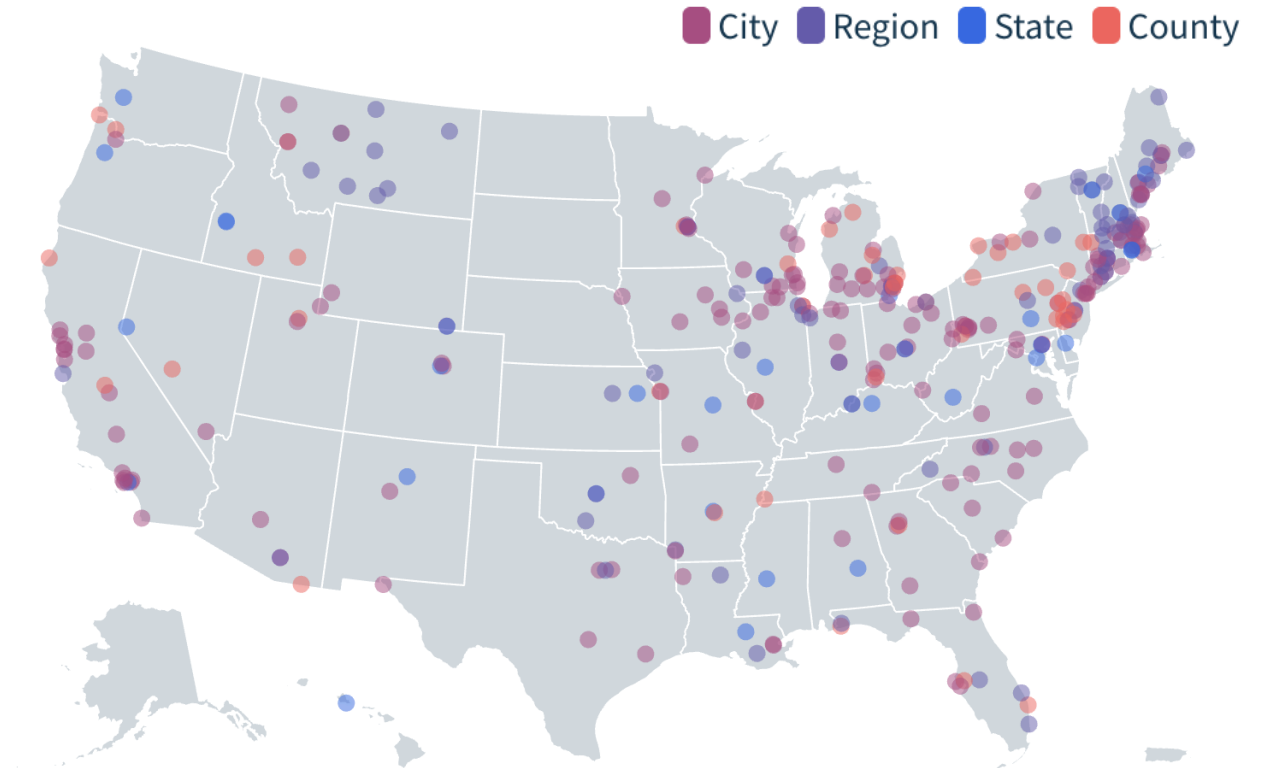
Nationally

\$866,443,439 in EPA RLF funding awarded

317 Cooperative Agreement Recipients (CARs) and **13** RLF awardees

586 Cooperative Agreements (CAs)

- **171** Open CAs
- **276** Closed CAs
- **137** Post-Closeout CAs



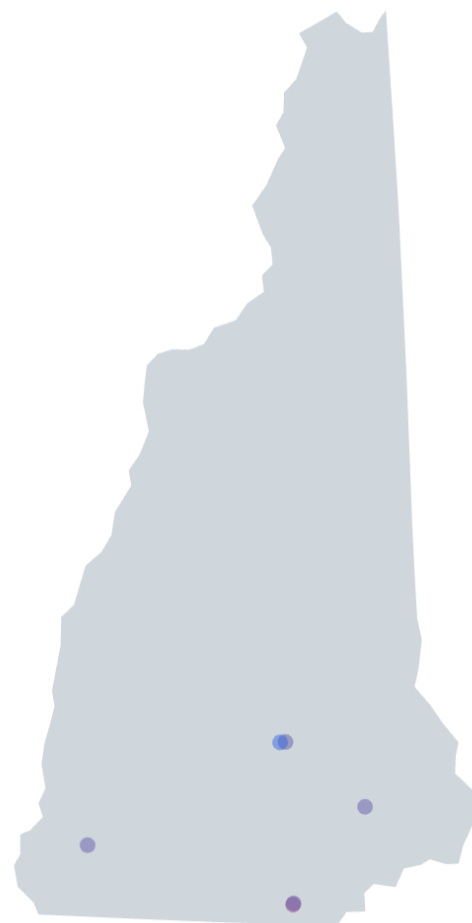
Fast Facts: Brownfield Revolving Loan Fund Assistance Agreements

New Hampshire

5 Cooperative Agreement Recipients (CARs) and **1** RLF awardee

7 Cooperative Agreements (CAs)

- **1** Open CA
- **2** Closed CAs
- **4** Post-Closeout CAs



■ City ■ Region ■ State

Project Goals

- **Build Partnerships** by establishing an **RLF Project Officer Academy** and creating an on-ramp to ready prospective applicants
- **Cultivate expertise** by offering a **cohort** training program, on demand technical assistance and other training modules and resources
- **Peer-to-Peer Exchanges** by holding **in-person National and Regional meetings to create exchange opportunities to collaborate on** needs, strategies, capacities and program impact, as well as an online portal
- **Develop Network** by establishing a **national RLF Advisory Council** and online portal with forums representing various topic areas and creating a platform for outside exchanges with developers, lenders, and EJ groups



Audience and Activities

Target Audience: EPA-funded
RLFs operating currently



**RLF Advisory
Committee**



Virtual RLF Network




**Trainings and
Resources**

Training and Resources

- A curated training program with workshops on topics that cross all organizations
- Create training cohorts of RLFs that will have specific curriculum guided by conversations with Stakeholders
- Portal will have a resource library and opportunity to contact GA Field Directors with questions

Resource Library

Search

1 2 3

Resource type

- ☐ Case Study (2)
- ☐ Checklist or Worksheet (5)
- ☐ Fact Sheet (1)
- ☐ Guide (4)
- ☐ Handbook (2)
- ☐ Notice (1)
- ☐ Online Resource (1)
- ☐ Plan (4)
- ☐ Report (8)
- ☐ Slide Deck (17)
- ☐ Training (1)
- ☐ Video (9)
- ☐ Webinar (4)
- ☐ Workshop (12)

Reset

[Suggest a resource to include in this collection](#)



Webinar

January 2023 RLF

The purpose of the training webinar on project officers and RLF grant recipient changes in...



Video | Workshop

RLF Plans Worksho

The workshop included a great panel of topics relevant to writing or redesigning



Video | Workshop

How Cities Naviga Economic Order

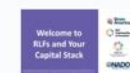
During this presentation, Bruce Katz dis affecting cities—reshoring, unpreceden the clean energy transition—and how m



Video | Workshop

RLF 201 Worksho

Executive Director of Region XII Council tips based on his experience about wha redesign your RLF plan.



Video | Workshop

RLFs and Your Ca Workshop

Types of TA offered

- Review RFQ/RFPs for various items, including underwriting or environmental consultants
- Review of consultant proposals
- Review underwriting and underwriting report to give feedback
- Review of RLF Applications
- Questions on Davis/Bacon
- Samples of proformas or loan underwriting spreads
- General RLF questions
- Post-Closeout RLF Questions
- How to layer RLF into a project
- And other questions as they come up!

Stay Engaged



- **Join our Portal**
- **Open Office Hours**
 - Wednesday, **September 24th**: 3-5pm ET/12-2pm PT: [Register](#)
 - Wednesday, **October 22nd**: 3-5pm ET/12-2pm PT: [Register](#)
 - Wednesday, **November 19th**: 3-5pm ET/12-2pm PT: [Register](#)

We look forward to working with you!

- Grow America website:
growamerica.org
- Please sign up on our new RLF TA TAB website:
epa-rlf-tab.growamerica.org/welcome
- EPA RLF TAB email:
epa-rlf-tab@growamerica.org
- Program Manager Contact Info:
 - Diana Sasser, Managing Director
dsasser@growamerica.org
(209) 483-9863
- East Team Lead Contact Info:
 - Erin Howard, Field Director
ehoward@growamerica.org
(860) 638-9684



ADAAPTA

Krisandra Provencher



SWRPC





BROWNFIELDS JOB TRAINING

An Introduction to Technical Assistance



Disclaimer

The EPA's Office of Brownfields and Land Revitalization (OBLR) currently has an open Notice of Funding Opportunity (NOFO) and grant competition. Please be advised that EPA employees **(including, by extension, Adaapta and Tetra Tech staff)** will not address any questions beyond Threshold Questions, nor discuss topics related to the NOFO or the competition during this conference. For Threshold Questions, we will refer only to the information available in [the Frequently Asked Questions Document](#) or the [NOFO](#) itself.

The Brownfields Job Training Program is designed to:



- **Provide grants to eligible entities** to recruit, train, and place unemployed and under-employed residents from communities impacted by brownfields.
- **Equip graduates with wider skillsets** that improve their ability to secure full-time, sustainable employment within the larger environmental field.
- **Help further sustainable community revitalization** by ensuring that residents benefit from the revitalization and cleanup of brownfields.



Region 9, Los Angeles Conservation Corps HAZWOPER Training

Program Impact

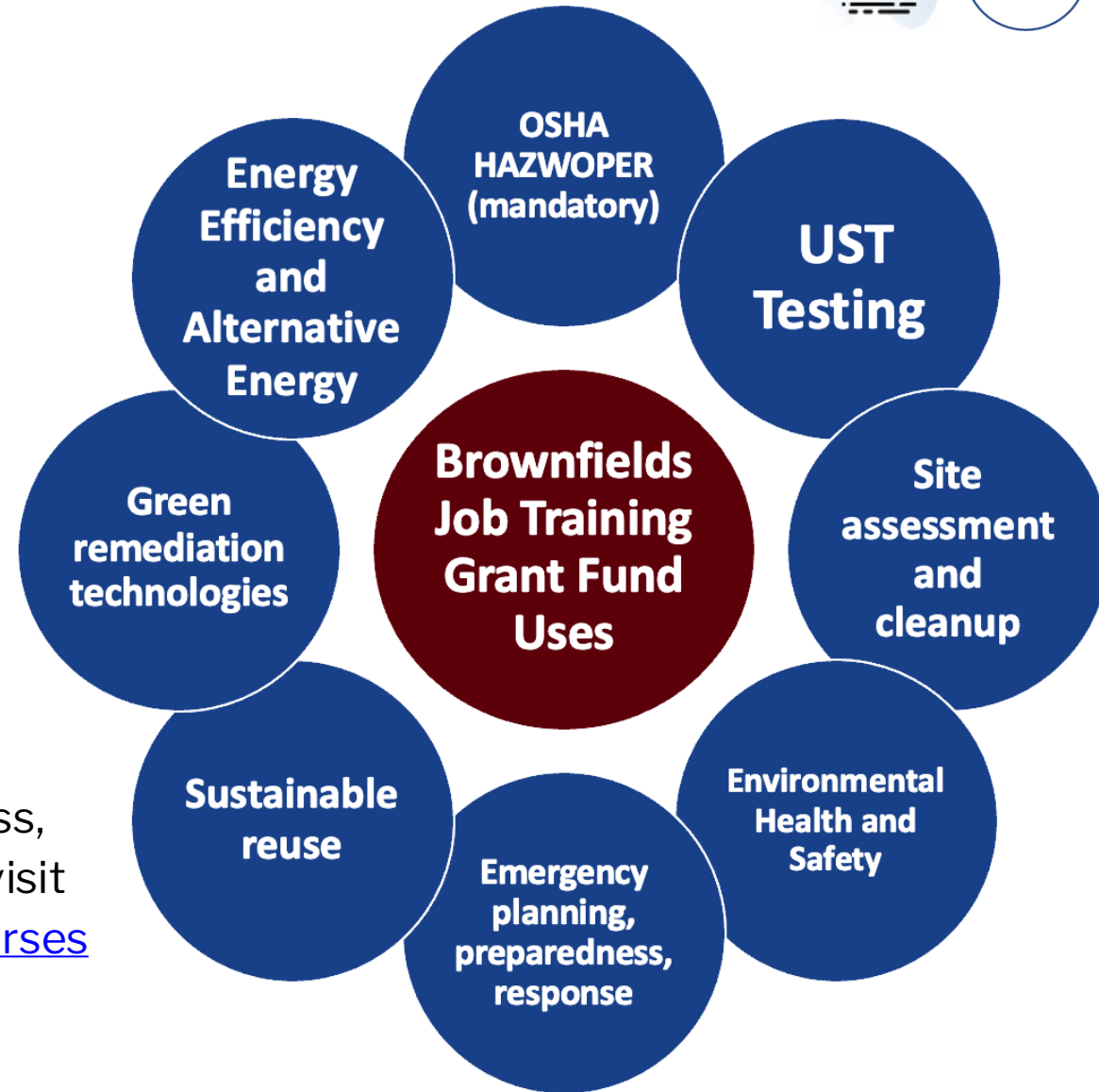
- Since inception, **431 job training grants** funded totaling approx. **\$107.8 million**
 - **~21,700 graduates**
 - **16,100+ obtained employment** in the environmental field.
 - Cumulative program **placement rate of 74%**
 - Graduates' starting wages are approximately **\$16.5 per hour**
- Since 2020: Average starting wage was **~\$22 per hour**



What Types of Training Are Eligible?

All training **must relate** to facilitating the inventory of brownfield sites, site assessments, remediation of brownfield sites, community involvement, or site preparation.

Note: All the above training can be delivered at awareness, intermediate, or advanced levels. For more information visit [List of Eligible and Ineligible Brownfield Job Training Courses](#) available on the [Brownfields Job Training page](#).



What Types of Costs Are Eligible?



Additional eligible uses of grant funds:

- Personnel costs for instructors to conduct training, fringe benefits, and/or tasks associated with programmatic reporting requirements
- Costs for screening and placement of students
- Costs associated with health exams, drug testing, licensing fees
- Costs for training materials and work gear associated with the training curriculum
- Outreach activities directed toward engaging prospective employers to be involved in the job training program and to hire graduates
- Participant support costs (up to 40% of the grant funds)
 - Transportation
 - Childcare
 - Time for participating in training



Region 9- Job Training class, Los Angeles Conservation Corps

Who is Eligible to Apply?

Eligible Entities:

- City, county, state, Tribe, other general purpose unit of local government
- Regional council
- Workforce Investment Board or One-Stop Center
- Nonprofit organization
- Redevelopment agencies
- Colleges and universities

You are NOT eligible to apply if you are:

- Nonprofit organizations described in Section 501(c)(4) of the Internal Revenue Code that engage in lobbying activities as defined in Section 3 of the Lobbying Disclosure Act of 1995
- For-profit or proprietary organization or trade school

Project Period of Performance

The project period for these grants is **up to 5 years**:

- Year 1 & 2: recruitment and screening/beginning of training
- Year 3 & 4: continued recruitment and screening/continuation and conclusion of training
- Year 5: placement and tracking of graduates and reporting results to EPA



Students of the Isles, Inc. Brownfields Job Training Program.

Brownfields Job Training Technical Assistance

- Professional Learning Community (PLC) Calls
- Resource Development
- Webinars
- **Virtual 1-on-1 Support**



brownfieldsjobtraining@adaapta.com



www.epa.gov/brownfields/forms/brownfields-job-training-program-technical-assistance-inquiry-form



TETRA TECH

adaapta



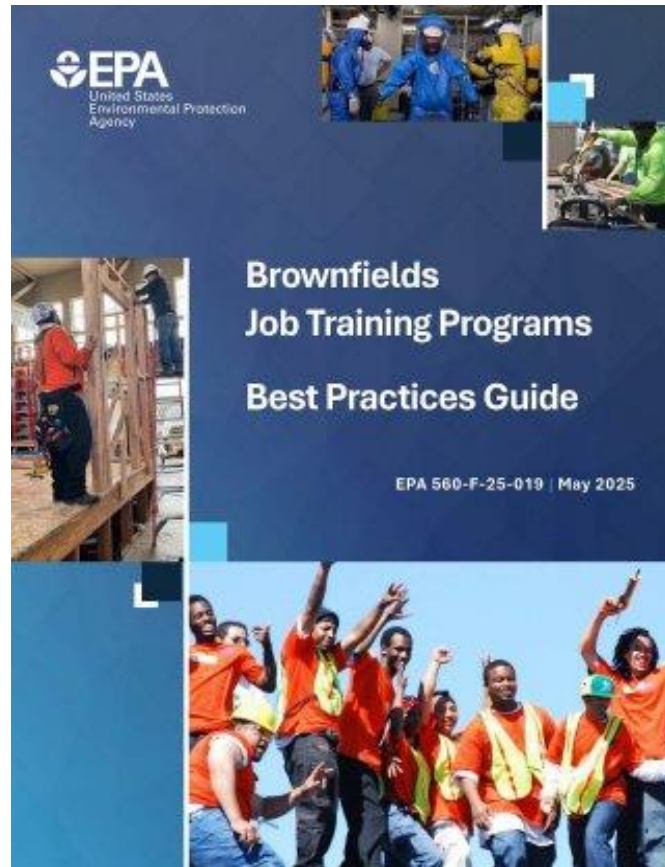
Professional Learning Community

- Connect with BFJT grantees, prospective applicants, technical assistance providers, and EPA staff.
- **Share best practices** and real-world strategies for program implementation
- Troubleshoot challenges
- Hear grantee success stories and **foster peer-to-peer learning**
- Stay up to date on EPA resources and upcoming opportunities



To be included on the invites for future PLC calls, submit an [inquiry form](#) and state in the "Inquiry" field a request to "Add me to future PLC call invites."

2025 Brownfields Job Training *Best Practices Guide*



Thank You!

- Upcoming Professional Learning Community (PLC) Call:
Wednesday, October 15th
- If you or an associate would like to receive notice of upcoming meetings and events, send your contact information to:
brownfieldsjobtraining@adaapta.com
- Submit an inquiry or request for technical assistance at
www.epa.gov/brownfields/forms/brownfields-job-training-program-technical-assistance-inquiry-form

Q&A and Open Discussion



Networking & Closing

