

MEET YOUR TECHNICAL ASSISTANCE PROVIDERS

March 25, 2026



TECHNICAL ASSISTANCE PROVIDERS

Job Training TA Program



Krisandra Provencher

Revolving Loan Fund(RLF) TA Program



Erin Howard



Job Training Technical Assistance Program





TETRA TECH

adaapta

BROWNFIELDS JOB TRAINING

An Introduction to Technical Assistance



Disclaimer

This project has been funded wholly or in part by the United States Environmental Protection Agency under a contract with Tetra Tech and Adaapta. The contents of this document do not necessarily reflect the views and policies of the Environmental Protection Agency, nor does the EPA endorse trade names or recommend the use of commercial products mentioned in this document.

About the Program

- The EPA Brownfields Job Training (**BFJT**) Program provides grants to recruit, train, and place unemployed and underemployed residents in environmental careers.
- **Equip individuals** with the skills to secure full-time, sustainable employment in the environmental field.
- **Helps communities** benefit directly from local brownfield cleanup and redevelopment projects.



Students testing for lead paint - Sustainable Workplace

Alliance, Kissimmee, FL

Program Showcase



PathStone Corporation, Puerto Rico

Program Impact

- Since inception, **456 job training grants** funded totaling approx. **\$119 million**
- Since Feb 2026*:
 - **23,400+ individuals** completed training
 - **17,400+ obtained employment** in the environmental field.
 - Cumulative program **placement rate of 74%**
- Last 5 years: Average starting wage was **~\$23 per hour**

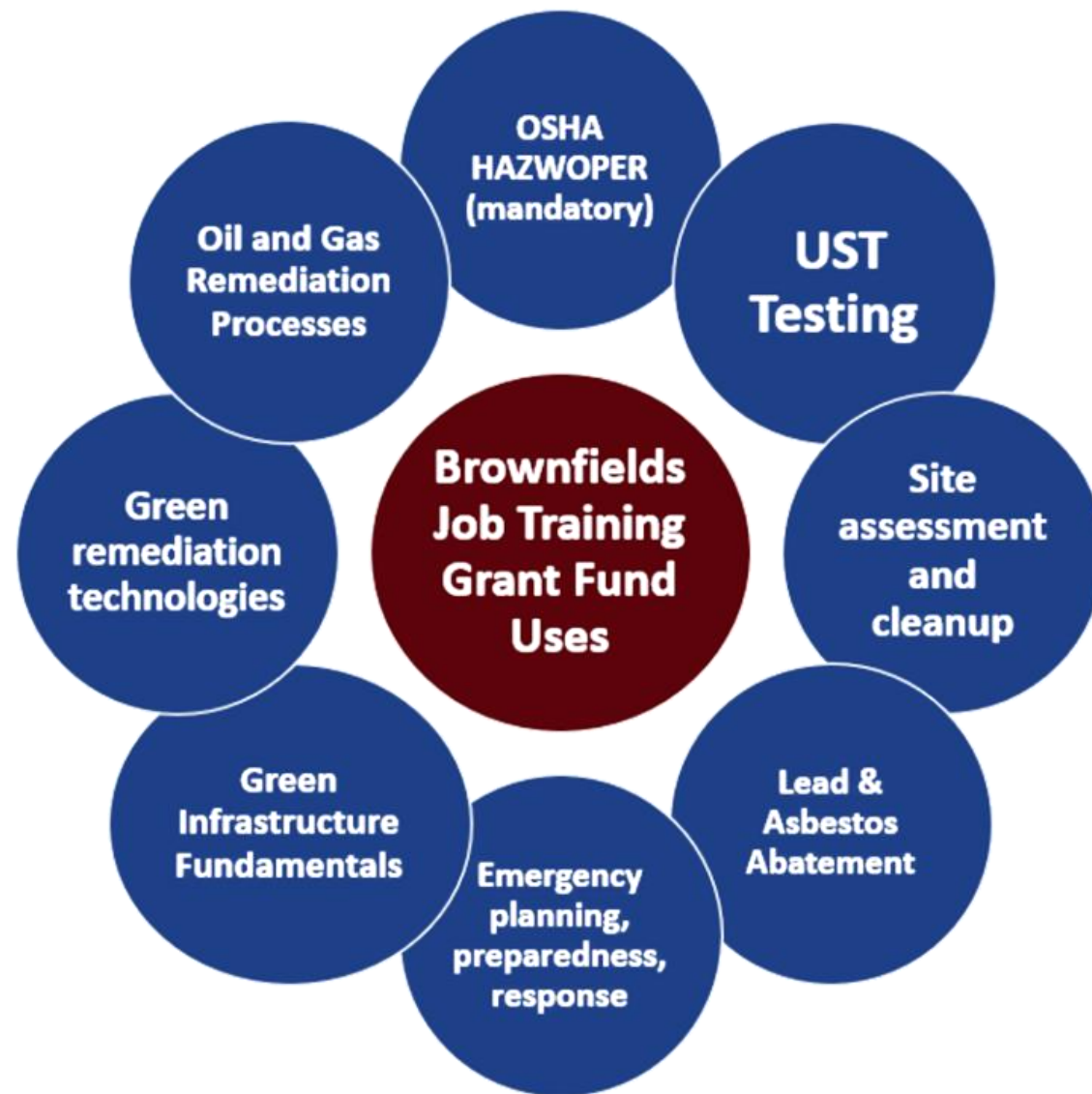
*Excluding pilot program years



Decon Line! - Los Angeles Conservation Corps, Los Angeles, CA

What Types of Training Are Eligible?

All training must relate to facilitating the inventory of brownfield sites, site assessments, remediation of brownfield sites, community involvement, or site preparation.



Note: All the above training can be delivered at awareness, intermediate, or advanced levels.

For more information visit [List of Eligible and Ineligible Brownfield Job Training Courses](#) available on the [Brownfields Job Training page](#).

What Types of Costs Are Eligible?



Practicing underground storage tank tasks - City of Tacoma, WA

Additional eligible uses of grant funds:

- Salaries and fringe benefits for instructors and staff directly delivering environmental training and related programmatic activities.
- Caseworkers or specialists who help participants address employment barriers and support job retention for up to one year after training.
- Outreach, eligibility screening, enrollment, and job placement activities.
- Required training supplies, protective gear, and costs to develop or refine curricula aligned with industry needs.
- Personnel time to build and maintain employer relationships; integrate employer input into curriculum; involve employers in training; secure hiring commitments; and support graduate success in employment.
- Participant support costs (up to 40% of the grant funds) for transportation, childcare, or time for participating in training. Includes stipends, gas cards, bus passes, etc.

Who is Eligible to Apply?

Eligible Entities:

- City, county, state, Tribe, other general purpose unit of local government
- Regional council
- Workforce Investment Board or One-Stop Center
- Nonprofit organization
- Redevelopment agencies
- Colleges and universities

You are **NOT** eligible to apply if you are:

- Nonprofit organizations described in Section 501(c)(4) of the Internal Revenue Code that engage in lobbying activities as defined in Section 3 of the Lobbying Disclosure Act of 1995
- For-profit or proprietary organization or trade school



Sludge Sampling - Santa Fe Community Collage, Santa Fe,

NM

Brownfields Job Training Support

The U.S. EPA Brownfields and Land Revitalization Program can provide coordinated technical assistance to help plan, prepare, and strengthen local Brownfields Job Training (BFJT) programs. The three complementary support channels described below can help guide an organization from pre-application through program design and capacity building. For more information on the U.S. EPA Brownfields and Land Revitalization Program, visit: www.epa.gov/brownfields

EPA Regional Coordinators

Explain rules, requirements, compliance, and official guidance, including:

- Confirm eligibility or application requirements.
- Clarify grant conditions, deadlines, threshold items, or allowable costs.
- Address reporting and compliance issues.
- Understand regional funding priorities or opportunities.



Regional Technical Assistance to Brownfields (TAB) Providers

Share perspectives on brownfields, job training connections and application support, including:

- Guidance on navigating the application process.
- Review of draft applications.
- Review training course descriptions.
- General questions about brownfields in your region.
- Connections to regional resources or partners.



BFJT Technical Assistance

Build capacity for program design, implementation and best practices, including:

- Curriculum planning.
- Employer engagement and partnership development.
- Tracking outcomes, data collection, and performance metrics.
- Program Sustainability planning.
- Access to tools, templates.
- Individualized 1-on-1 consultations for tailored support.

Note: Assistance related to implementation support is not available to applying entities during an open Notice of Funding Opportunity.



Technical Assistance Team



Steve Michener
Project Manager



Sherry Weedman
Sr. Enviro. Health Scientist/ Program
Manager



Eric Eisiminger
Project Manager



Danielle Getsinger
CEO



Krisandra Provencher
*Project Manager & Community
Engagement Specialist*



Mike Senew
Senior Advisor



Bertina Carter
*Workforce Development
Specialist*



brownfieldsjobtraining@adaapta.com

Professional Learning Community (PLC)

- **Connect** with BFJT grantees, prospective applicants, technical assistance providers, and EPA staff
- **Share** best practices and real-world strategies for program implementation
- **Troubleshoot** challenges
- **Listen** to grantee success stories and foster peer-to-peer learning
- **Learn** about EPA resources and upcoming opportunities

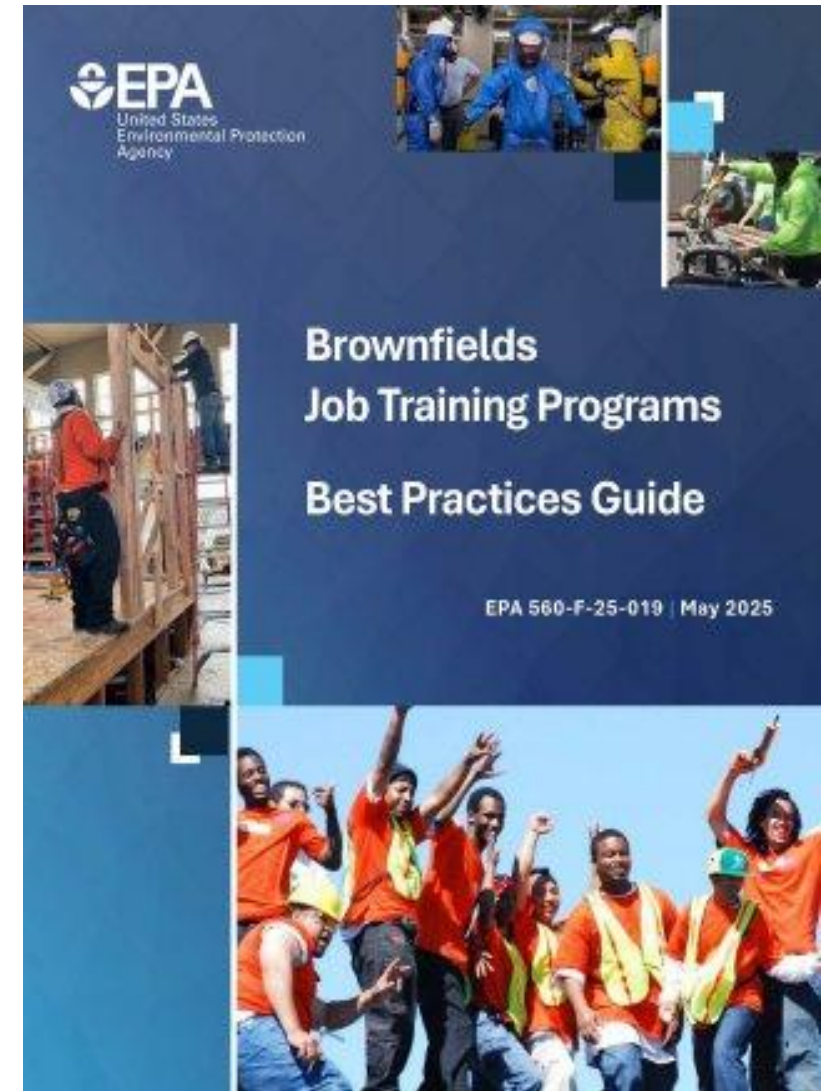


To be included on the invites for future PLC calls, submit an [inquiry form](#) and state in the "Inquiry" field a request to "Add me to future PLC call invites."

<https://www.epa.gov/brownfields/brownfields-job-training-grants-professional-learning-community>

Additional Resources

- For the latest BFJT news and resources, go to www.epa.gov/brownfields/brownfields-job-training-grants
- Best Practices Guide
<https://www.epa.gov/system/files/documents/2023-10/bp-toolbox-report.pdf>
- Participant Tracking Workbook
<https://www.epa.gov/brownfields/brownfields-job-training-grant-program-participant-tracking-workbook>



Connect with Us!

- If you or an associate would like to receive notice of upcoming meetings and events, send your contact information to: brownfieldsjobtraining@adaapta.com
- Submit an inquiry or request for technical assistance at www.epa.gov/brownfields/forms/brownfields-job-training-program-technical-assistance-inquiry-form



Following the leader for safety - City of Tacoma, WA

RLF Technical Assistance Program



RLF TAB

Technical Assistance for Brownfields
Revolving Loan Funds

Led by:  **GrowAmerica** **ICMA**

Your Presenter



Erin Howard
East Region
Field Director



Established in 1969, Grow America is the nation's oldest non-profit provider of community development technical assistance and training. We work in partnership with communities, economies, and capacity with hands-on technical assistance.

Learn more at growamerica.org.



Founded in 1914, ICMA (the International City/County Management Association) is the premier professional association for local government leaders, managers, staff, and stakeholders with more than 13,000 members.

Learn more at icma.org.

Grow America invests capital to craft equitable, vibrant futures

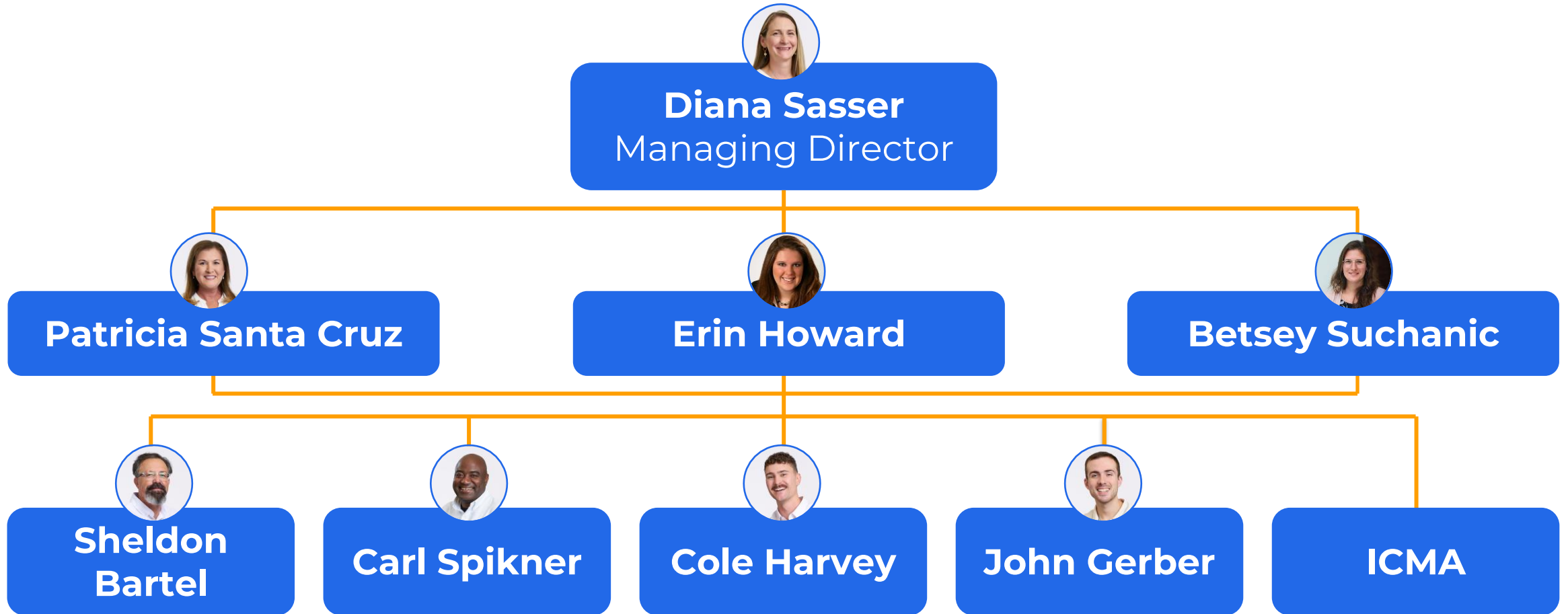
- Nationwide lending and entrepreneurial support
- Professional education and training
- Investments in housing and community development
- Advisory support for housing and community development





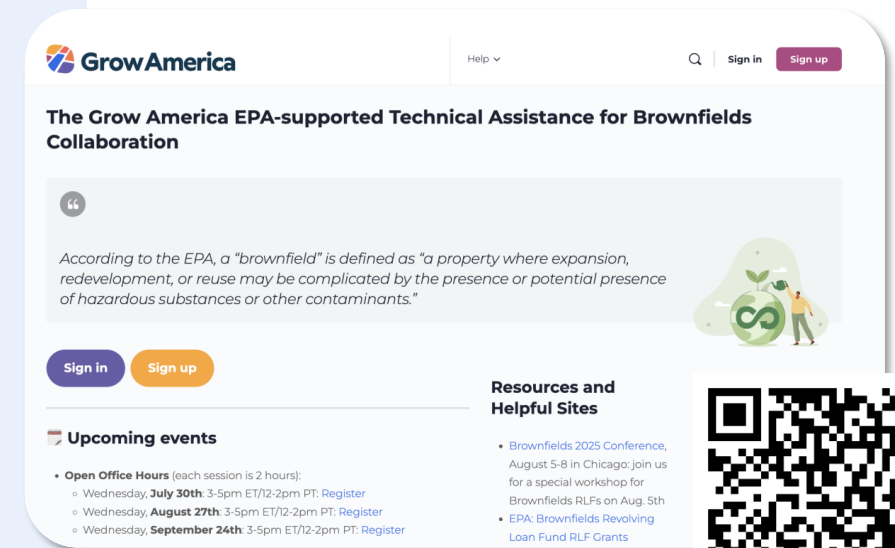
ICMA's work includes the following projects among others:

- National Brownfields Training Conference (EPA)
- SolSmart, WindWise, EV Smart (DOE)
- Economic Recovery Corps (International Economic Development Council and EDA)
- City Health Dashboard (New York University and Robert Wood Johnson Foundation)
- Economic Mobility and Opportunity Cohorts and Learning Communities (Bill & Melinda Gates Foundation)



Providing financial technical assistance to strengthen EPA Brownfields Revolving Loan Fund (RLF) programs.

This program supports both new & existing grantees in establishing long-term successful RLF programs, focusing on financial capacity, networking, & training.



epa-rlf-tab.growamerica.org

RLF TAB *Technical Assistance for Brownfields Revolving Loan Funds*

→ **Federal
Funding for
Brownfields**

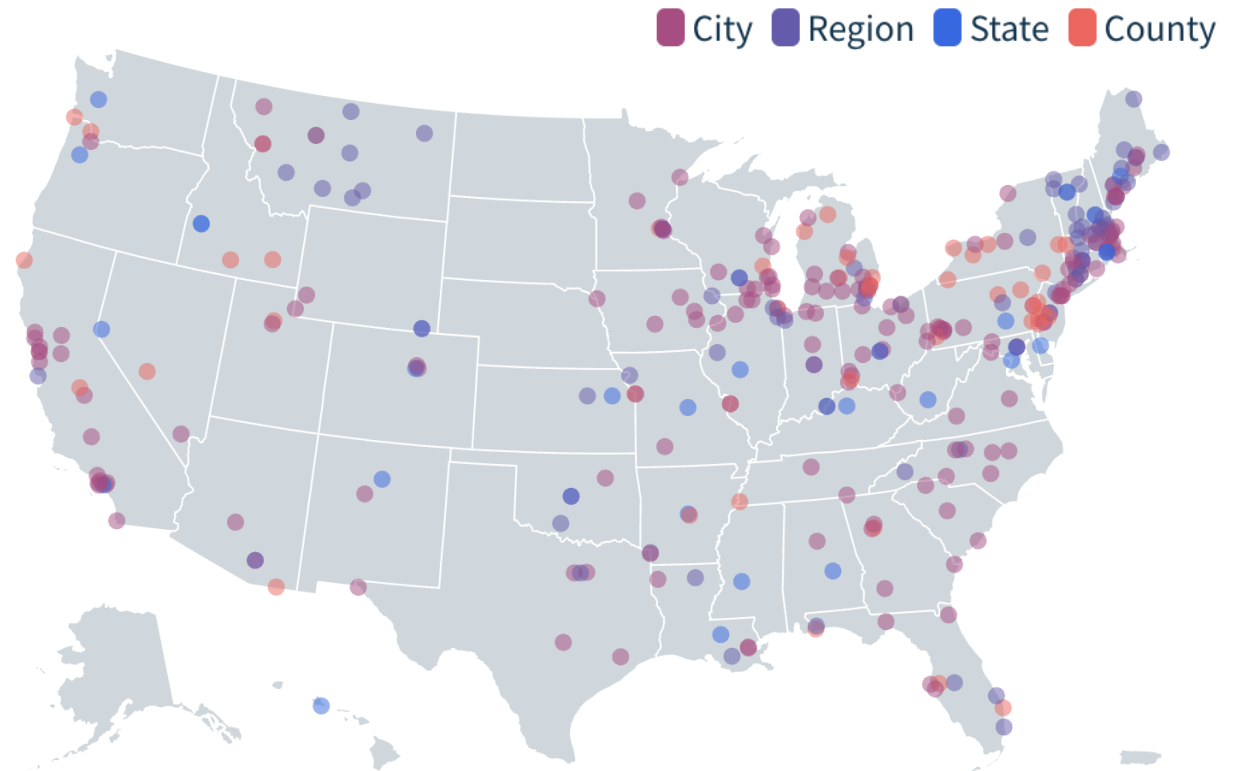


Program Goals

- **Build Partnerships** by establishing an **RLF Project Officer Academy** and creating an on-ramp to ready prospective applicants
- **Peer-to-Peer Exchanges** by holding **in-person National and Regional meetings** to create exchange opportunities to collaborate on needs, strategies, capacities and program impact, as well as an online portal
- **Cultivate expertise** by offering a **cohort** training program, on demand technical assistance and other training modules and resources
- **Develop Network** by establishing a **national RLF Advisory Council** and online portal with forums representing various topic areas and creating a platform for outside exchanges with developers, lenders, and EJ groups

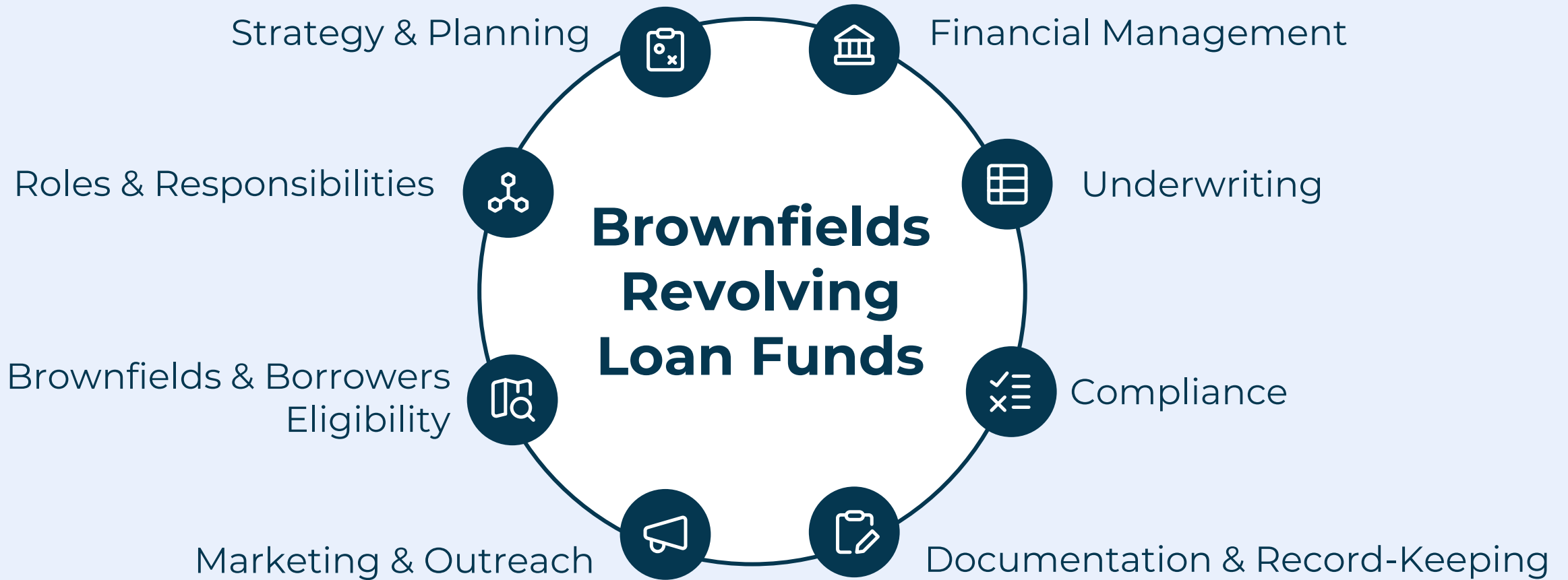
Brownfield RLFs, funded by EPA, provides communities with capital, loans and subgrants for clean-up activities to redevelop polluted sites.

There are 332 Cooperative Agreement Recipients (CARs).



Revolving Loan Fund Grants

- Can loan to public sector/agencies, non-profits or for-profit developers
- Can provide subgrants/forgivable loans to public or non-profits
- Grantee determines loan terms
- Five-year performance period
- Provides up to \$1,000,000

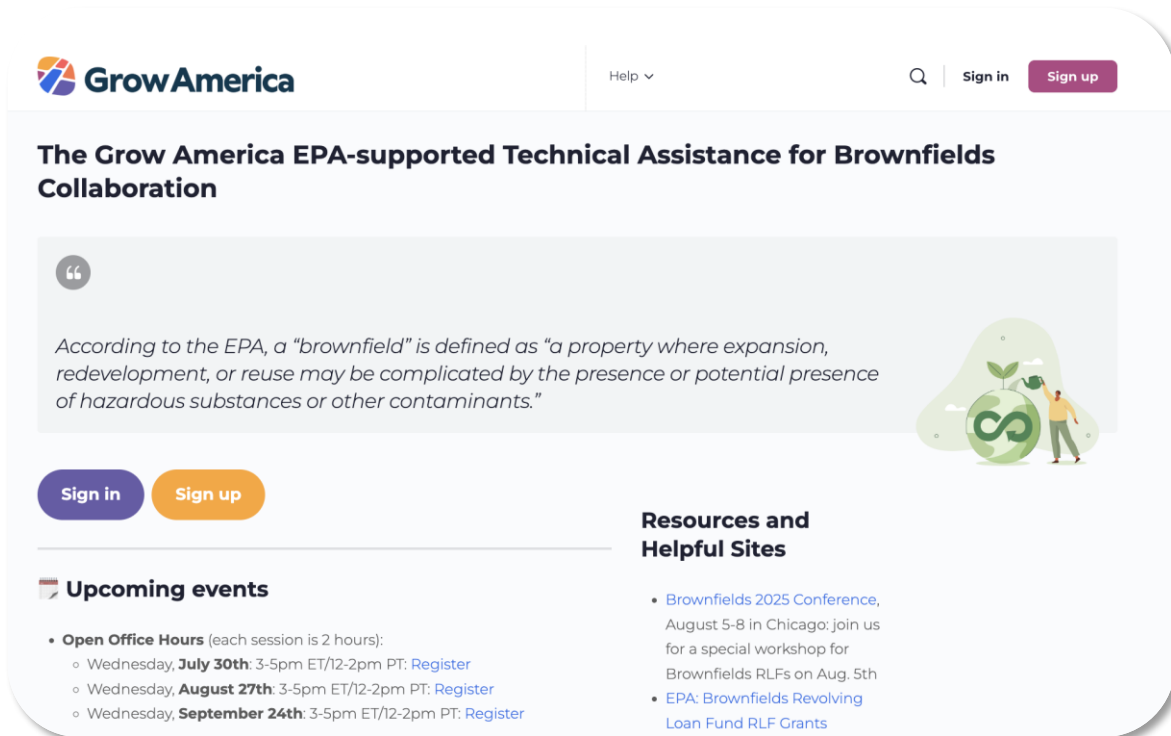


In 2026, we plan to:

- Continue to provide **on-demand technical assistance** to EPA RLF grantees, including identifying best practices and building a **robust resource library within the online platform**
- Host **four in-person regional Brownfields RLF Workshops**
- Host **two webinar series**, each with four sessions, one focused on RLF essentials and one focused on understanding brownfield
- Continue **monthly office hours**.



On-Demand Technical Assistance Online-Portal – Resource Library



The screenshot shows the website interface for the EPA-supported Technical Assistance for Brownfields Collaboration. At the top left is the GrowAmerica logo. To its right is a 'Help' dropdown menu, a search icon, and 'Sign in' and 'Sign up' buttons. The main heading reads 'The Grow America EPA-supported Technical Assistance for Brownfields Collaboration'. Below this is a quote: 'According to the EPA, a "brownfield" is defined as "a property where expansion, redevelopment, or reuse may be complicated by the presence or potential presence of hazardous substances or other contaminants."' To the right of the quote is an illustration of a person standing next to a green plant growing from a dollar sign. Below the quote are 'Sign in' and 'Sign up' buttons. The page is divided into two columns. The left column is titled 'Upcoming events' and lists three sessions: 'Open Office Hours' (each 2 hours) on Wednesday, July 30th (3-5pm ET/12-2pm PT), August 27th (3-5pm ET/12-2pm PT), and September 24th (3-5pm ET/12-2pm PT), each with a 'Register' link. The right column is titled 'Resources and Helpful Sites' and lists two items: 'Brownfields 2025 Conference, August 5-8 in Chicago: join us for a special workshop for Brownfields RLFs on Aug. 5th' and 'EPA: Brownfields Revolving Loan Fund RLF Grants', both with links.

 epa-rlf-tab.growamerica.org



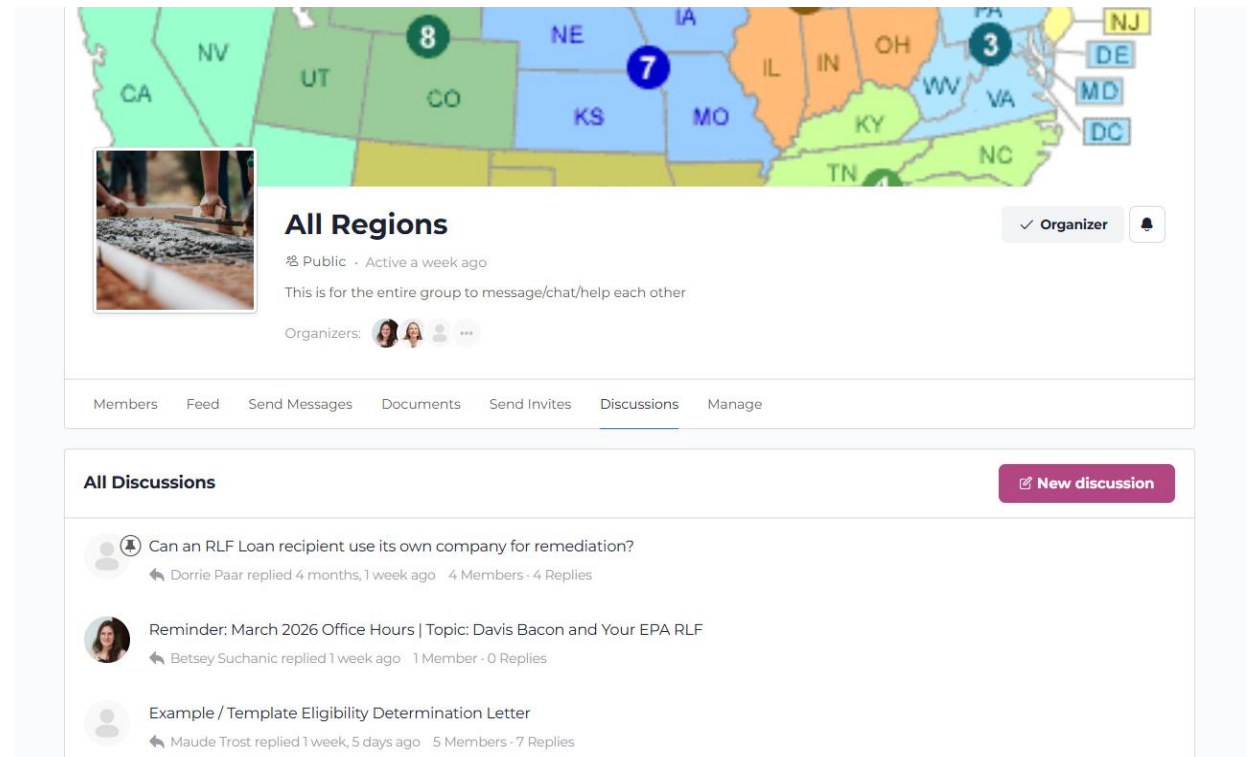
On-Demand Technical Assistance One on One Engagement

Types of Technical Assistance

- Review RFQ/RFPs for various items, including underwriting or environmental consultants
- Review of consultant proposals
- Review underwriting and underwriting report to give feedback
- Review of RLF Applications
- Questions on Davis Bacon/compliance
- Samples of proformas or loan underwriting spreads
- General RLF questions
- Post-Closeout RLF Questions
- How to layer RLF into a project
- *And other questions as they come up!*

On-Demand Technical Assistance Peer to Peer Engagement

- Portal allows and encourages discussion between CARS
 - Ask Questions
 - Share Stories
 - Share Resources



Open Office Hours

- **Wednesday, June 10, 2026** @ 3-5pm ET/12-2pm PT: This office hours session will focus on *Loans to Self*. [Register](#).
- **Wednesday, July 22, 2026** @ 3-5pm ET/12-2pm PT: This office hours session will focus on *Navigating Post-Closeout*. [Register](#).
- **Wednesday, August 19, 2026** @ 3-5pm ET/12-2pm PT: This office hours session will focus on *Sourcing or Building Underwriting Capacity*. [Register](#).

"Great office hours. Thanks for providing these resources!"

Ted Choi South Portland Maine

In Person- Workshops



Save the Date: Brownfields
RLF Workshop Series






Register Today: Brownfields RLF Workshop Series

 **Louisville, Kentucky**
Workshop: April 21-22 @ The Seelbach Hilton Louisville

 **New Orleans, Louisiana**
Workshop: October 6-7 @ InterContinental New Orleans

 **Portland, Maine Workshop:**
May 28-29 @ Holiday Inn Portland - by the Bay

 **Clark County, Nevada**
Workshop: December 8-9 @ AC Hotel Symphony Park

Space for these free workshops is limited!

RLF Essentials Webinar Series

RLF Essentials Webinar Series

Lending Basics

March 5, 2026 @ 1pm ET/10am PT

[Lending Basics Webinar
Recording \(March 5, 2026\) –
Grow America EPA RLF TAB](#)

RLF Essentials Webinar Series

- Upcoming Webinar – Understanding the Development Process
- April 7 @ 1 PM
- Register Online at [Grow America EPA RLF TAB – RLF Technical Assistance for Brownfields brought to you by Grow America](#)



Tuesday, April 7, 1:00 PM Upcoming

RLF Essentials: Understanding the Development Process

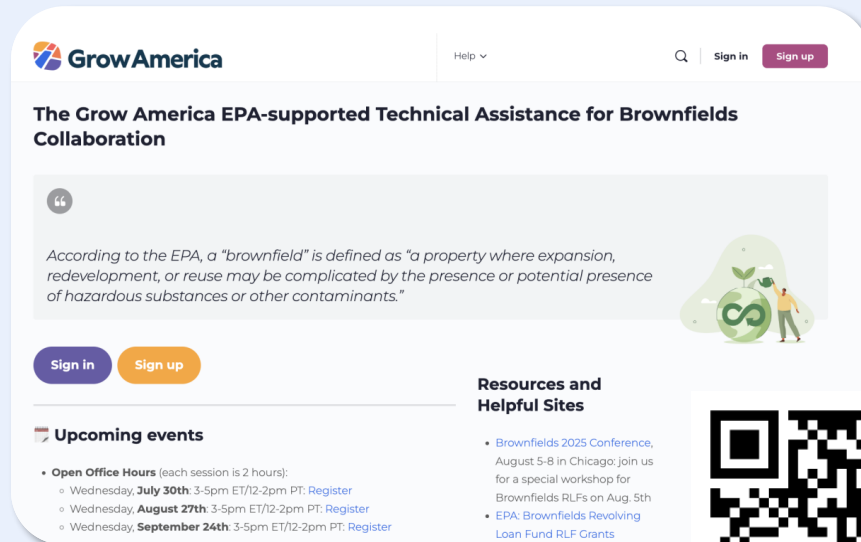
Building on our Introduction to Revolving Loan Fund webinar, this webinar will provide an overview of the key steps in the development process. Participants will walk through the process, from developing the concept to ongoing property operations, including considerations for financial feasibility and sources and uses of funds.

This webinar is part of the **EPA RLF TAB's Revolving Loan Fund Essentials Webinar Series**. Join us for a four-part webinar series diving into the core components of managing a Brownfields Revolving Loan Fund (RLF). This series provides foundational knowledge to build capacity for your EPA RLF program. Stay tuned for future webinars on the [EPA RLF TAB online platform!](#)

RLF TAB Technical Assistance for Brownfields *Revolving Loan Funds*



epa-rlf-tab.growamerica.org



Grow America



growamerica.org



(212) 682-1106



633 Third Avenue,
Floor 19, Suite J
New York, NY 10017

Questions & Contact Information



UConn TAB

Upcoming Webinars



- FEB 26th** Talk Nerdy to Me: Promoting Strong Science Comm
- MAR 18th** Building Relationships with CBOs
- MAR 25th** Meet Your Job Training and RLF TA Providers
- APR 1st** Community Engagement Resources
- APR 29th** Best Practices for Communicating Grant Progress
- MAY 13th** Community Specific Brownfield Risk Communication
- JUN 10th** Brownfield Developers Panel
- JUL 8th** Let's Talk about Liability and Why We Do a Phase I



WEDNESDAYS

12:00 PM



VIRTUAL(WEBEX)



REGISTER

[S.UCONN.EDU/26SPRINGWEBINAR](https://s.uconn.edu/26springwebinar)



UCONN

REGION 1 TECHNICAL
ASSISTANCE TO
BROWNFIELDS

UCONN

REGION 1 TECHNICAL
ASSISTANCE TO
BROWNFIELDS

